

# San Diego International Airport

Lindbergh Field

## Air Traffic Report

February

2011



**Air Service Development Department**  
San Diego County Regional Airport Authority  
Post Office Box 82776  
San Diego, CA 92138-2776  
(619) 400-2875

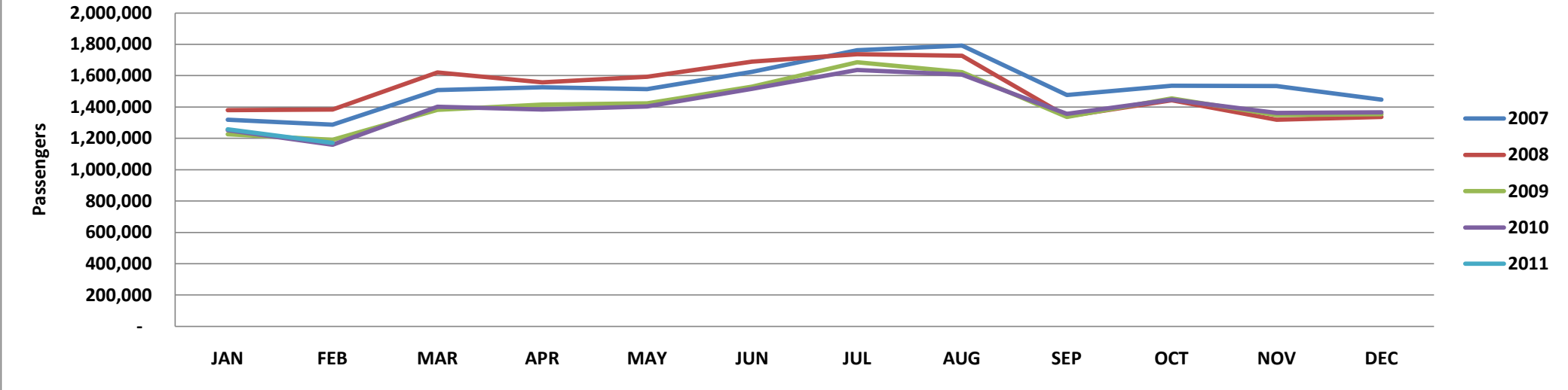
### Summary Data

	February				Calendar Year-to-Date			
	2011	2010	Change	% Change	2011	2010	Change	% Change
<b><u>Domestic Passengers</u></b>								
Enplaned Passengers	572,349	568,064	4,285	0.8%	1,178,724	1,177,123	1,601	0.1%
Deplaned Passengers	<u>579,709</u>	<u>572,407</u>	<u>7,302</u>	<u>1.3%</u>	<u>1,209,326</u>	<u>1,194,969</u>	<u>14,357</u>	<u>1.2%</u>
<b>Total</b>	1,152,058	1,140,471	11,587	1.0%	2,388,050	2,372,092	15,958	0.7%
<b><u>International Passengers</u></b>								
Enplaned Passengers	9,227	9,213	14	0.2%	18,373	18,190	183	1.0%
Deplaned Passengers	<u>10,174</u>	<u>9,371</u>	<u>803</u>	<u>8.6%</u>	<u>22,004</u>	<u>19,571</u>	<u>2,433</u>	<u>12.4%</u>
<b>Total</b>	19,401	18,584	817	4.4%	40,377	37,761	2,616	6.9%
<b><u>Total Passengers</u></b>								
Enplaned Passengers	581,576	577,277	4,299	0.7%	1,197,097	1,195,313	1,784	0.1%
Deplaned Passengers	<u>589,883</u>	<u>581,778</u>	<u>8,105</u>	<u>1.4%</u>	<u>1,231,330</u>	<u>1,214,540</u>	<u>16,790</u>	<u>1.4%</u>
<b>Total</b>	1,171,459	1,159,055	12,404	1.1%	2,428,427	2,409,853	18,574	0.8%
<b><u>Domestic Air Cargo Tons</u></b>								
Enplaned Cargo Tons	4,334.1	4,269.9	64.2	1.5%	8,597.1	8,507.5	89.6	1.1%
Deplaned Cargo Tons	<u>4,348.3</u>	<u>4,037.9</u>	<u>310.4</u>	<u>7.7%</u>	<u>8,836.0</u>	<u>8,243.0</u>	<u>593.1</u>	<u>7.2%</u>
<b>Total</b>	8,682.4	8,307.8	374.6	4.5%	17,433.1	16,750.5	682.6	4.1%
<b><u>International Cargo Tons</u></b>								
Enplaned Cargo Tons	3.0	4.9	(2.0)	-39.8%	12.5	8.9	3.6	40.2%
Deplaned Cargo Tons	<u>0.3</u>	<u>-</u>	<u>0.3</u>	<u>100.0%</u>	<u>2.2</u>	<u>1.2</u>	<u>1.0</u>	<u>80.0%</u>
<b>Total</b>	3.3	4.9	(1.6)	-33.5%	14.6	10.1	4.5	45.0%
<b><u>Total Cargo Tons</u></b>								
Enplaned Cargo Tons	4,337.1	4,274.8	62.3	1.5%	8,609.6	8,516.4	93.1	1.1%
Deplaned Cargo Tons	<u>4,348.6</u>	<u>4,037.9</u>	<u>310.7</u>	<u>7.7%</u>	<u>8,838.2</u>	<u>8,244.2</u>	<u>594.0</u>	<u>7.2%</u>
<b>Total</b>	8,685.7	8,312.7	373.0	4.5%	17,447.7	16,760.6	687.2	4.1%
<b><u>US Mail Tons</u></b>								
Enplaned US Mail Tons	1,000.5	1,064.1	(63.6)	-6.0%	2,059.4	2,171.0	(112)	-5.1%
Deplaned US Mail Tons	<u>316.7</u>	<u>277.4</u>	<u>39.3</u>	<u>14.2%</u>	<u>679.8</u>	<u>598.2</u>	<u>82</u>	<u>13.6%</u>
<b>Total</b>	1,317.2	1,341.5	(24.3)	-1.8%	2,739.2	2,769.2	(30)	-1.1%
<b><u>FAA Air Traffic Activity*</u></b>								
Air Carrier	10,712	10,799	(87)	-0.8%	22,489	22,623	(134)	-0.6%
Air Taxi	2,132	2,359	(227)	-9.6%	4,446	4,739	(293)	-6.2%
General Aviation	771	783	(12)	-1.5%	1,647	1,644	3	0.2%
Military	<u>61</u>	<u>85</u>	<u>(24)</u>	<u>-28.2%</u>	<u>112</u>	<u>169</u>	<u>(57)</u>	<u>-33.7%</u>
<b>Total</b>	13,676	14,026	(350)	-2.5%	28,694	29,175	(481)	-1.6%
* FAA Aircraft Activity includes "Itinerant Operations" at the airport and will differ from other operational data reported by the airlines. <b>Source:</b> <a href="http://aspm.faa.gov/opsnet/sys/Airport.asp">http://aspm.faa.gov/opsnet/sys/Airport.asp</a>								

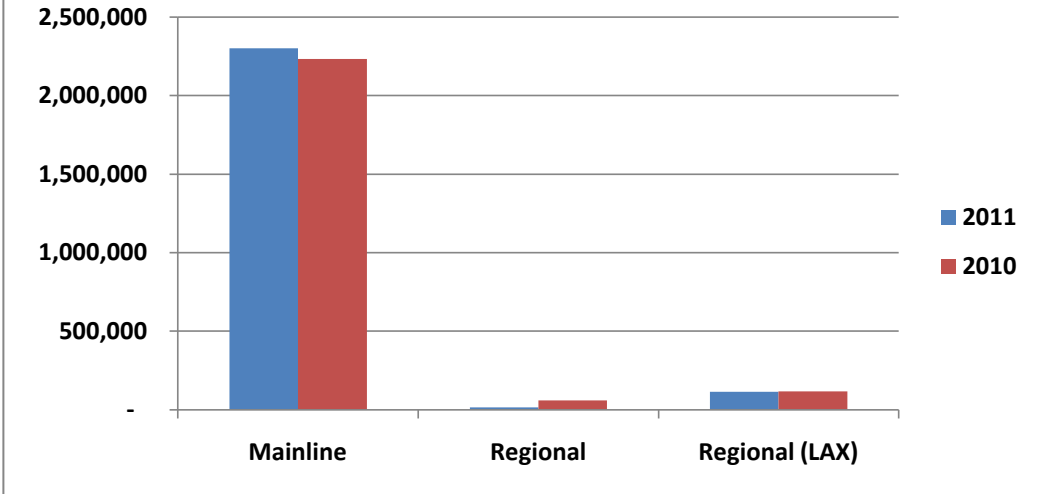
## Detailed Passenger Summary

	February				Calendar Year-to-Date			
	2011	2010	% Change	% Share	2011	2010	% Change	% Share
<b><u>Passengers by Type of Carrier*</u></b>								
Mainline	1,095,037	1,060,261	3.3%	93.5%	2,274,763	2,204,461	3.2%	93.7%
Mainline (International)	12,282	14,434	-14.9%	1.0%	24,806	29,449	-15.8%	1.0%
Regional	9,104	26,120	-65.1%	0.8%	15,251	59,760	-74.5%	0.6%
Regional (International)	-	-	0.0%	0.0%	-	-	0.0%	0.0%
Regional (LAX)	55,036	58,240	-5.5%	4.7%	113,607	116,183	-2.2%	4.7%
<b>Total</b>	1,171,459	1,159,055	1.1%	100.0%	2,428,427	2,409,853	0.8%	100.0%
<b><u>Passengers by Terminal Area</u></b>								
Commuter Terminal	55,036	58,240	-5.5%	4.7%	113,607	116,183	-2.2%	4.7%
Terminal 1 East	480,750	450,570	6.7%	41.0%	986,514	931,252	5.9%	40.6%
Terminal 1 West	202,843	204,994	-1.0%	17.3%	422,063	428,678	-1.5%	17.4%
Terminal 2 (FIS)	3,501	5,211	-32.8%	0.3%	8,255	11,054	-25.3%	0.3%
Terminal 2 East	183,210	160,847	13.9%	15.6%	378,888	338,928	11.8%	15.6%
Terminal 2 West	246,119	279,193	-11.8%	21.0%	519,100	583,758	-11.1%	21.4%
<b>Total</b>	1,171,459	1,159,055	1.1%	100.0%	2,428,427	2,409,853	0.8%	100.0%
<b><u>Gate Utilization Rate (Passengers)</u></b>								
Commuter Terminal	13,759	14,560	-5.5%		28,402	29,046	-2.2%	
Terminal 1 East	43,705	40,961	6.7%		89,683	84,659	5.9%	
Terminal 1 West	25,355	25,624	-1.0%		52,758	53,585	-1.5%	
Terminal 2 (FIS)	1,167	1,737	-32.8%		2,752	3,685	-25.3%	
Terminal 2 East	18,321	16,085	13.9%		37,889	33,893	11.8%	
Terminal 2 West	27,347	31,021	-11.8%		57,678	64,862	-11.1%	
<b>Net Gate Utilization Rate</b>	26,032	25,757	1.1%		53,965	53,552	0.8%	
<b><u>Passengers versus Capacity</u></b>								
Passengers per Departure	99.1	96.1	3.1%		98.1	96.0	2.1%	
Estimated Seats per Departure**	129.8	128.0	1.4%		130.0	128.4	1.2%	
<b>Estimated Load Factor</b>	76.3%	75.1%	1.6%		75.4%	74.8%	0.9%	
<b>* As reported by the Carriers.</b>								
<b>** Source: APGDat - Airline Planning Data.</b>								

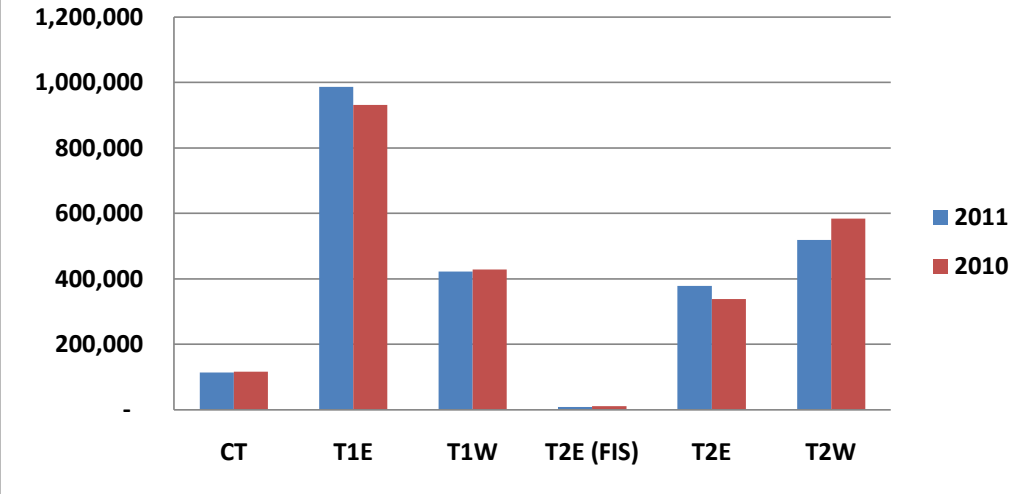
**Monthly Passenger Trend - 2007 through 2011**



**Passengers by Type of Carrier (2009 v 2010)**



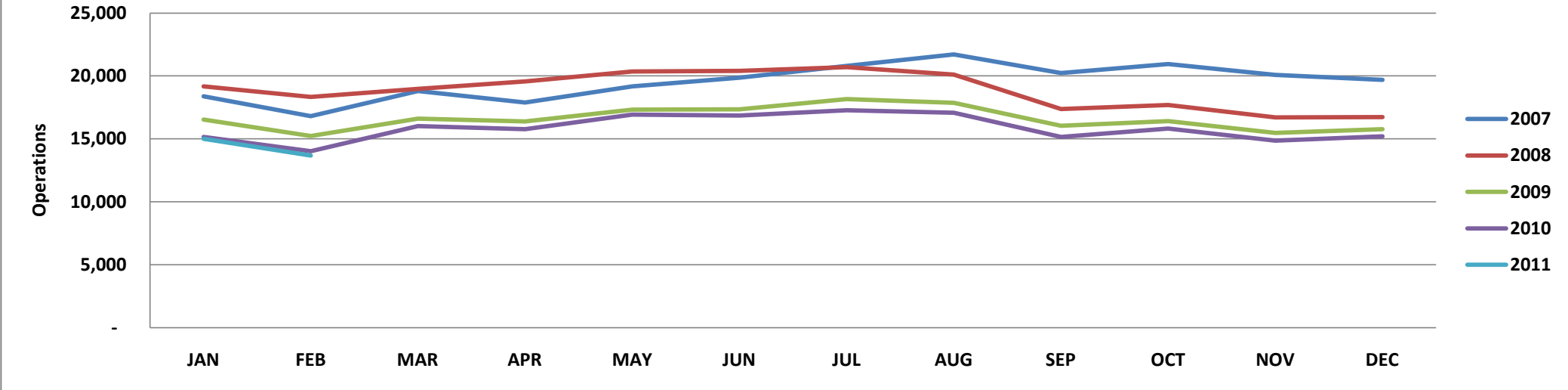
**Passengers by Terminal Area (2009 v 2010)**



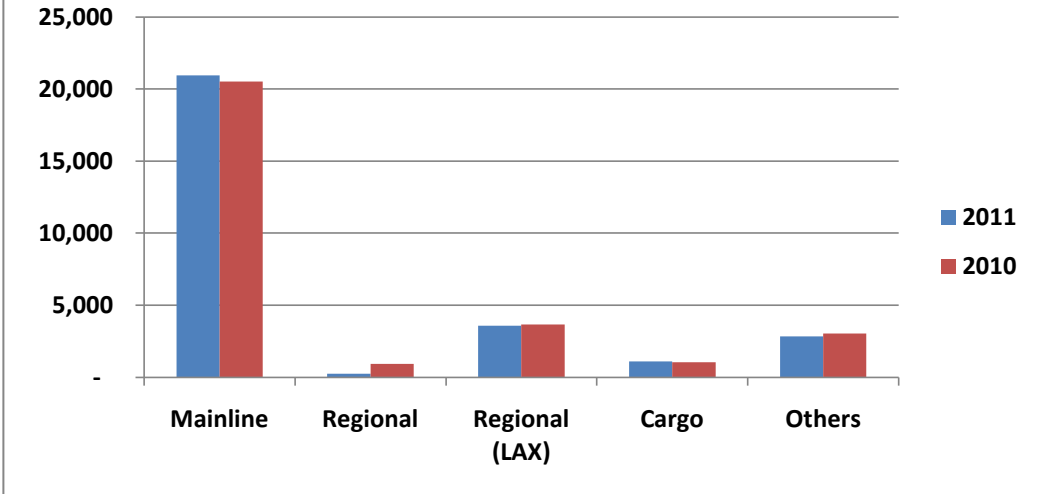
## Detailed Operations Summary

	February				Calendar Year-to-Date			
	2011	2010	% Change	% Share	2011	2010	Change	% Share
<b><u>Operations by Type of Carrier*</u></b>								
Mainline	9,807	9,640	1.7%	71.7%	20,660	20,128	2.6%	72.0%
Mainline (International)	136	176	-22.7%	1.0%	280	384	-27.1%	1.0%
Regional	146	388	-62.4%	1.1%	240	914	-73.7%	0.8%
Regional (International)	-	-	0.0%	0.0%	-	-	0.0%	0.0%
Regional (LAX)	1,736	1,857	-6.5%	12.7%	3,585	3,673	-2.4%	12.5%
All Cargo	530	508	4.3%	3.9%	1,096	1,050	4.4%	3.8%
Other Operations (AC, AT, GA, MIL)	1,321	1,457	-9.3%	9.7%	2,833	3,026	-6.4%	9.9%
<b>Total</b>	<u>13,676</u>	<u>14,026</u>	-2.5%	100.0%	<u>28,694</u>	<u>29,175</u>	-1.6%	100.0%
<b><u>Operations by Terminal Area</u></b>								
Commuter Terminal	1,736	1,857	-6.5%	14.7%	3,585	3,673	-2.4%	14.5%
Terminal 1 East	4,938	4,952	-0.3%	41.8%	10,316	10,230	0.8%	41.7%
Terminal 1 West	1,722	1,714	0.5%	14.6%	3,639	3,631	0.2%	14.7%
Terminal 2 (FIS)	57	68	-16.2%	0.5%	119	157	-24.2%	0.5%
Terminal 2 East	1,525	1,339	13.9%	12.9%	3,213	2,849	12.8%	13.0%
Terminal 2 West	1,847	2,131	-13.3%	15.6%	3,893	4,559	-14.6%	15.7%
<b>Total</b>	<u>11,825</u>	<u>12,061</u>	-2.0%	100.0%	<u>24,765</u>	<u>25,099</u>	-1.3%	100.0%
<b><u>Gate Utilization Rate (Operations)</u></b>								
Commuter Terminal	7.8	8.3	-6.5%		7.6	7.8	-2.4%	
Terminal 1 East	8.0	8.0	-0.3%		7.9	7.9	0.8%	
Terminal 1 West	3.8	3.8	0.5%		3.9	3.8	0.2%	
Terminal 2 (FIS)	0.3	0.4	-16.2%		0.3	0.4	-24.2%	
Terminal 2 East	2.7	2.4	13.9%		2.7	2.4	12.8%	
Terminal 2 West	3.7	4.2	-13.3%		3.7	4.3	-14.6%	
<b>Net Gate Utilization Rate</b>	<u>4.7</u>	<u>4.8</u>	-2.0%		<u>4.7</u>	<u>4.7</u>	-1.3%	
<b><u>Passenger Operations Schedule Reliability</u></b>								
Scheduled Passenger Operations	11,959	12,280	-2.6%		25,071	25,632	-2.2%	
Actual Passenger Operations	<u>11,825</u>	<u>12,061</u>	-2.0%		<u>24,765</u>	<u>25,099</u>	-1.3%	
<b>Net Schedule Reliability</b>	98.9%	98.2%	0.7%		98.8%	97.9%	0.9%	
<b>* As reported by the Carriers and the FAA.</b>								

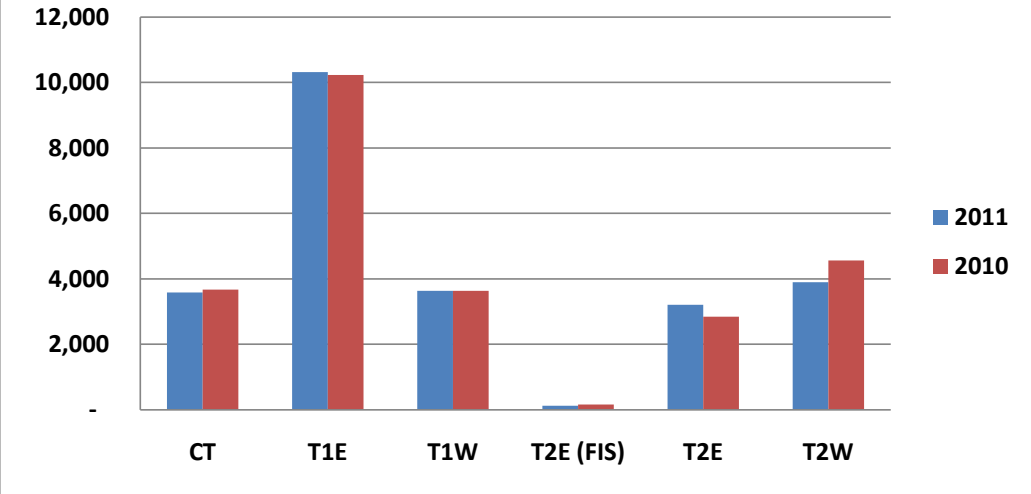
**Monthly Operations Trend - 2007 through 2011**



**Operations by Type (2009 v 2010)**



**Operations by Terminal Area (2009 v 2010)**



## Terms and Definitions

<b>Air Carrier (AC)</b>	An aircraft with seating capacity of more than 60 seats or a maximum payload capacity of more than 18,000 pounds carrying passengers or cargo for hire or compensation. This includes US and foreign flagged carriers.	<b>General Aviation (GA)</b>	Takeoffs and landings of all civil aircraft, except those classified as air carriers, air taxis or military.
<b>Air Taxi (AT)</b>	An aircraft with a maximum seating capacity of 60 seats or less or a maximum payload capacity of 18,000 pounds or less carrying passengers or cargo for hire or compensation.	<b>Itinerant Operation</b>	Itinerant operations are operations performed by an aircraft, either IFR, SVFR, or VFR, that lands at an airport, arriving from outside the airport area, or departs an airport and leaves the airport area.
<b>All Cargo</b>	Air Carrier and Air Taxi Operations devoted specifically to the carriage of air cargo.	<b>Mainline</b>	Operations by Major, National and All Cargo Carriers. This includes US and foreign flagged carriers.
<b>FAA Air Traffic Activity</b>	The number of "Itinerant" arrivals and departures from the airport at which the airport traffic control tower is located.	<b>Military (MIL)</b>	All classes of military takeoffs and landings.
<b>Gate Utilization Rate (Operations)</b>	The average number of airline departures per gate, per day.	<b>Regional</b>	Operations conducted by the contracted partners or wholly owned subsidiaries of Mainline Carriers utilizing Regional Jets and Turboprops with 20 or more seats.
<b>Gate Utilization Rate (Passengers)</b>	The average number of passengers per gate, per month or per year.	<b>Schedule Reliability</b>	The number of Scheduled Passenger flights completed versus the number of flights scheduled expressed a percentage.