

San Diego International Airport

Lindbergh Field

Air Traffic Report

June

2011



Air Service Development Department
San Diego County Regional Airport Authority
Post Office Box 82776
San Diego, CA 92138-2776
(619) 400-2875

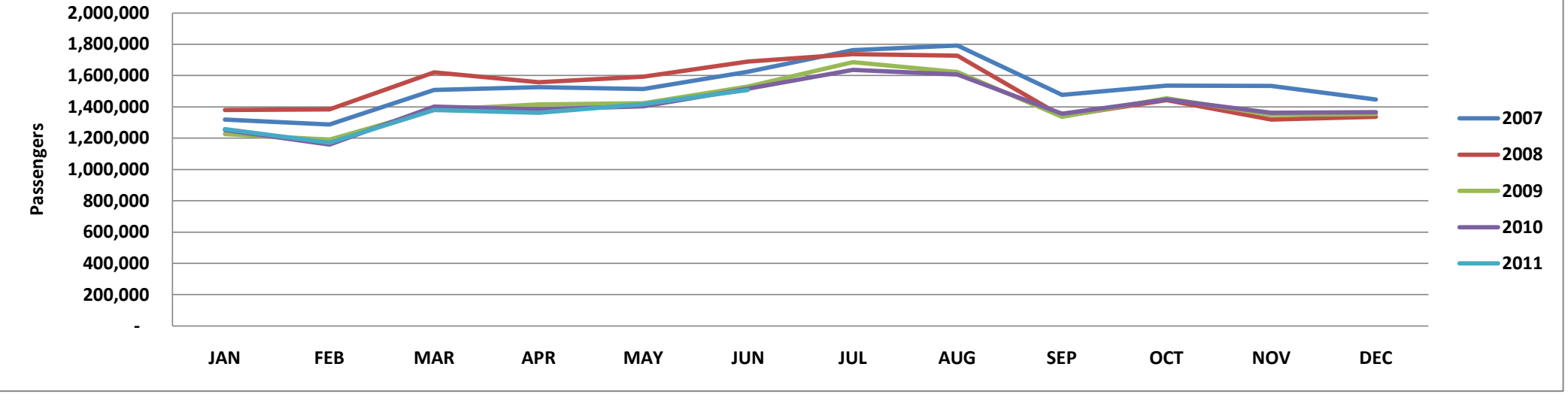
Summary Data

	June				Calendar Year-to-Date			
	2011	2010	Change	% Change	2011	2010	Change	% Change
<u>Domestic Passengers</u>								
Enplaned Passengers	741,162	750,147	(8,985)	-1.2%	3,974,888	3,999,282	(24,394)	-0.6%
Deplaned Passengers	<u>732,475</u>	<u>749,254</u>	<u>(16,779)</u>	<u>-2.2%</u>	<u>3,980,864</u>	<u>4,000,771</u>	<u>(19,907)</u>	<u>-0.5%</u>
Total	1,473,637	1,499,401	(25,764)	-1.7%	7,955,752	8,000,053	(44,301)	-0.6%
<u>International Passengers</u>								
Enplaned Passengers	16,643	8,318	8,325	100.1%	66,159	56,821	9,338	16.4%
Deplaned Passengers	<u>17,154</u>	<u>7,885</u>	<u>9,269</u>	<u>117.6%</u>	<u>72,442</u>	<u>58,369</u>	<u>14,073</u>	<u>24.1%</u>
Total	33,797	16,203	17,594	108.6%	138,601	115,190	23,411	20.3%
<u>Total Passengers</u>								
Enplaned Passengers	757,805	758,465	(660)	-0.1%	4,041,047	4,056,103	(15,056)	-0.4%
Deplaned Passengers	<u>749,629</u>	<u>757,139</u>	<u>(7,510)</u>	<u>-1.0%</u>	<u>4,053,306</u>	<u>4,059,140</u>	<u>(5,834)</u>	<u>-0.1%</u>
Total	1,507,434	1,515,604	(8,170)	-0.5%	8,094,353	8,115,243	(20,890)	-0.3%
<u>Domestic Air Cargo Tons</u>								
Enplaned Cargo Tons	4,894.8	4,491.1	403.7	9.0%	27,862.1	27,103.4	758.7	2.8%
Deplaned Cargo Tons	<u>4,825.5</u>	<u>4,770.4</u>	<u>55.1</u>	<u>1.2%</u>	<u>27,968.5</u>	<u>26,793.0</u>	<u>1,175.5</u>	<u>4.4%</u>
Total	9,720.3	9,261.5	458.8	5.0%	55,830.6	53,896.4	1,934.2	3.6%
<u>International Cargo Tons</u>								
Enplaned Cargo Tons	393.8	5.5	388.3	7060.0%	422.0	23.7	398.3	1680.5%
Deplaned Cargo Tons	<u>0.1</u>	<u>-</u>	<u>0.1</u>	<u>100.0%</u>	<u>4.3</u>	<u>1.2</u>	<u>3.1</u>	<u>258.3%</u>
Total	393.9	5.5	388.4	7060.9%	426.3	24.9	401.4	1612.0%
<u>Total Cargo Tons</u>								
Enplaned Cargo Tons	5,288.6	4,496.6	792.0	17.6%	28,284.1	27,127.1	1,157.0	4.3%
Deplaned Cargo Tons	<u>4,825.6</u>	<u>4,770.4</u>	<u>55.2</u>	<u>1.2%</u>	<u>27,972.8</u>	<u>26,794.2</u>	<u>1,178.6</u>	<u>4.4%</u>
Total	10,114.2	9,267.0	847.2	9.1%	56,256.9	53,921.3	2,335.6	4.3%
<u>US Mail Tons</u>								
Enplaned US Mail Tons	1,014.5	854.2	160.2	18.8%	6,164.0	5,999.2	165	2.7%
Deplaned US Mail Tons	<u>299.8</u>	<u>229.2</u>	<u>70.6</u>	<u>30.8%</u>	<u>1,906.8</u>	<u>1,707.1</u>	<u>200</u>	<u>11.7%</u>
Total	1,314.3	1,083.4	230.9	21.3%	8,070.7	7,706.3	364	4.7%
<u>FAA Air Traffic Activity*</u>								
Air Carrier	12,715	13,086	(371)	-2.8%	71,377	72,888	(1,511)	-2.1%
Air Taxi	2,289	2,634	(345)	-13.1%	13,877	15,495	(1,618)	-10.4%
General Aviation	815	1,065	(250)	-23.5%	5,161	5,835	(674)	-11.6%
Military	<u>72</u>	<u>60</u>	<u>12</u>	<u>20.0%</u>	<u>375</u>	<u>528</u>	<u>(153)</u>	<u>-29.0%</u>
Total	15,891	16,845	(954)	-5.7%	90,790	94,746	(3,956)	-4.2%
* FAA Aircraft Activity includes "Itinerant Operations" at the airport and will differ from other operational data reported by the airlines. Source: http://aspm.faa.gov/opsnet/sys/Airport.asp								

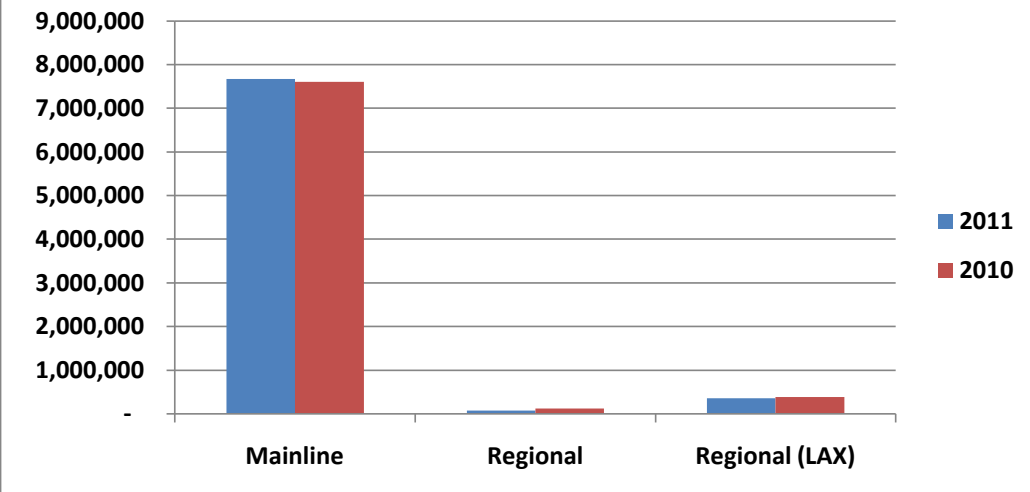
Detailed Passenger Summary

	June				Calendar Year-to-Date			
	2011	2010	% Change	% Share	2011	2010	% Change	% Share
Passengers by Type of Carrier*								
Mainline	1,408,446	1,425,523	-1.2%	93.4%	7,577,070	7,519,554	0.8%	93.6%
Mainline (International)	27,276	9,578	184.8%	1.8%	92,707	85,686	8.2%	1.1%
Regional	12,911	12,988	-0.6%	0.9%	70,674	125,631	-43.7%	0.9%
Regional (International)	-	-	0.0%	0.0%	-	-	0.0%	0.0%
Regional (LAX)	58,801	67,515	-12.9%	3.9%	353,902	384,372	-7.9%	4.4%
Total	1,507,434	1,515,604	-0.5%	100.0%	8,094,353	8,115,243	-0.3%	100.0%
Passengers by Terminal Area								
Commuter Terminal	58,801	67,515	-12.9%	3.9%	353,902	384,372	-7.9%	4.4%
Terminal 1 East	569,946	569,296	0.1%	37.8%	3,192,780	3,124,122	2.2%	39.4%
Terminal 1 West	232,113	238,207	-2.6%	15.4%	1,347,526	1,389,019	-3.0%	16.6%
Terminal 2 (FIS)	10,396	3,312	213.9%	0.7%	30,841	35,455	-13.0%	0.4%
Terminal 2 East	250,494	235,389	6.4%	16.6%	1,289,805	1,162,119	11.0%	15.9%
Terminal 2 West	385,684	401,885	-4.0%	25.6%	1,879,499	2,020,156	-7.0%	23.2%
Total	1,507,434	1,515,604	-0.5%	100.0%	8,094,353	8,115,243	-0.3%	100.0%
Gate Utilization Rate (Passengers)								
Commuter Terminal	14,700	16,879	-12.9%		88,476	96,093	-7.9%	
Terminal 1 East	51,813	51,754	0.1%		290,253	284,011	2.2%	
Terminal 1 West	29,014	29,776	-2.6%		168,441	173,627	-3.0%	
Terminal 2 (FIS)	3,465	1,104	213.9%		10,280	11,818	-13.0%	
Terminal 2 East	25,049	23,539	6.4%		128,981	116,212	11.0%	
Terminal 2 West	42,854	44,654	-4.0%		208,833	224,462	-7.0%	
Net Gate Utilization Rate	33,499	33,680	-0.5%		179,875	180,339	-0.3%	
Passengers versus Capacity								
Passengers per Departure	108.2	105.0	3.0%		103.0	99.8	3.2%	
Estimated Seats per Departure**	132.3	130.6	1.3%		130.6	128.7	1.5%	
Estimated Load Factor	81.8%	80.4%	1.7%		78.8%	77.5%	1.7%	
<i>* As reported by the Carriers.</i>								
<i>** Source: APGDat - Airline Planning Data.</i>								

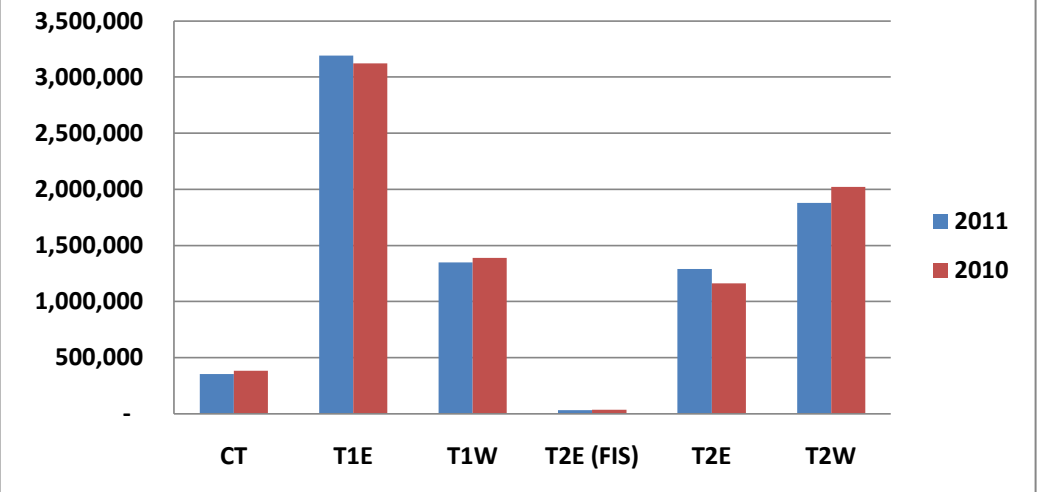
Monthly Passenger Trend - 2007 through 2011



Passengers by Type of Carrier (2009 v 2010)



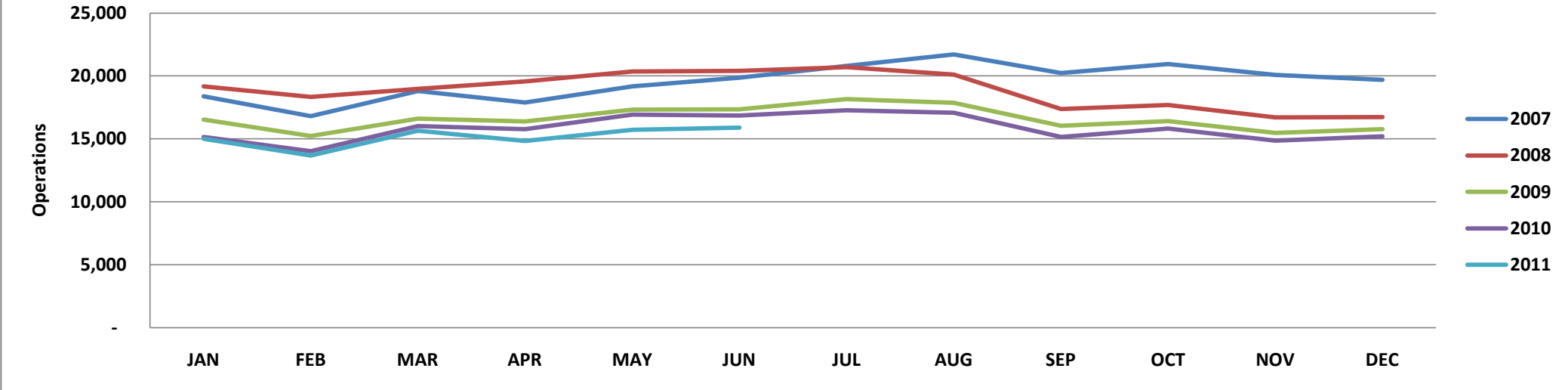
Passengers by Terminal Area (2009 v 2010)



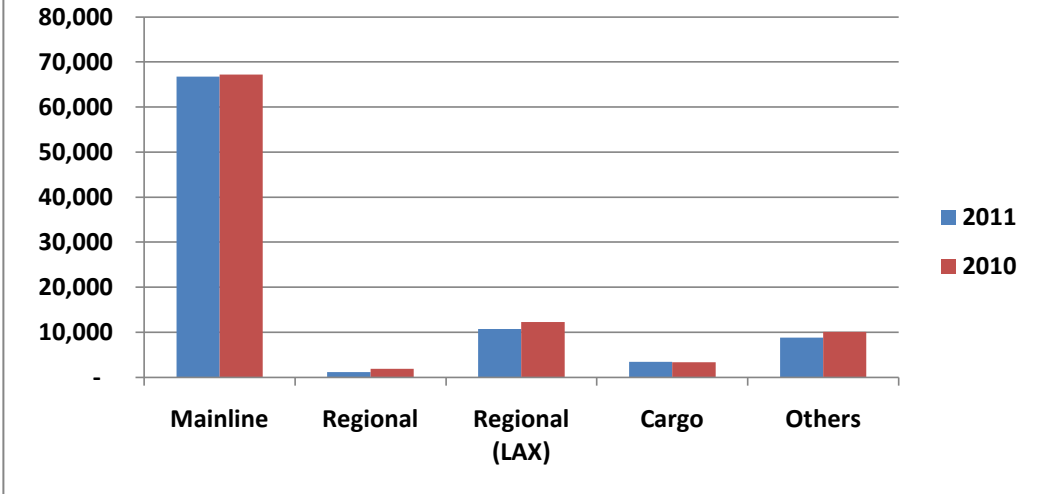
Detailed Operations Summary

	June				Calendar Year-to-Date			
	2011	2010	% Change	% Share	2011	2010	Change	% Share
<u>Operations by Type of Carrier*</u>								
Mainline	11,766	12,064	-2.5%	74.0%	65,782	66,159	-0.6%	72.5%
Mainline (International)	222	114	94.7%	1.4%	954	1,023	-6.7%	1.1%
Regional	162	240	-32.5%	1.0%	1,188	1,904	-37.6%	1.3%
Regional (International)	-	-	0.0%	0.0%	-	-	0.0%	0.0%
Regional (LAX)	1,782	2,012	-11.4%	11.2%	10,700	12,266	-12.8%	11.8%
All Cargo	540	538	0.4%	3.4%	3,384	3,342	1.3%	3.7%
Other Operations (AC, AT, GA, MIL)	1,419	1,877	-24.4%	8.9%	8,782	10,052	-12.6%	9.7%
Total	<u>15,891</u>	<u>16,845</u>	-5.7%	100.0%	<u>90,790</u>	<u>94,746</u>	-4.2%	100.0%
<u>Operations by Terminal Area</u>								
Commuter Terminal	1,782	2,012	-11.4%	12.8%	10,700	12,266	-12.8%	13.6%
Terminal 1 East	5,566	5,708	-2.5%	40.0%	32,300	32,766	-1.4%	41.1%
Terminal 1 West	1,945	1,866	4.2%	14.0%	11,336	11,393	-0.5%	14.4%
Terminal 2 (FIS)	65	30	116.7%	0.5%	339	410	-17.3%	0.4%
Terminal 2 East	1,949	1,828	6.6%	14.0%	10,426	9,352	11.5%	13.3%
Terminal 2 West	2,625	2,986	-12.1%	18.8%	13,523	15,165	-10.8%	17.2%
Total	<u>13,932</u>	<u>14,430</u>	-3.5%	100.0%	<u>78,624</u>	<u>81,352</u>	-3.4%	100.0%
<u>Gate Utilization Rate (Operations)</u>								
Commuter Terminal	7.4	8.4	-11.4%		7.4	8.5	-12.8%	
Terminal 1 East	8.4	8.6	-2.5%		8.1	8.2	-1.4%	
Terminal 1 West	4.1	3.9	4.2%		3.9	3.9	-0.5%	
Terminal 2 (FIS)	0.4	0.2	116.7%		0.3	0.4	-17.3%	
Terminal 2 East	3.2	3.0	6.6%		2.9	2.6	11.5%	
Terminal 2 West	4.9	5.5	-12.1%		4.2	4.7	-10.8%	
Net Gate Utilization Rate	<u>5.2</u>	<u>5.3</u>	-3.5%		<u>4.8</u>	<u>5.0</u>	-3.4%	
<u>Passenger Operations Schedule Reliability</u>								
Scheduled Passenger Operations	13,941	14,492	-3.8%		79,313	82,135	-3.4%	
Actual Passenger Operations	<u>13,932</u>	<u>14,430</u>	-3.5%		<u>78,624</u>	<u>81,352</u>	-3.4%	
Net Schedule Reliability	99.9%	99.6%	0.4%		99.1%	99.0%	0.1%	
* As reported by the Carriers and the FAA.								

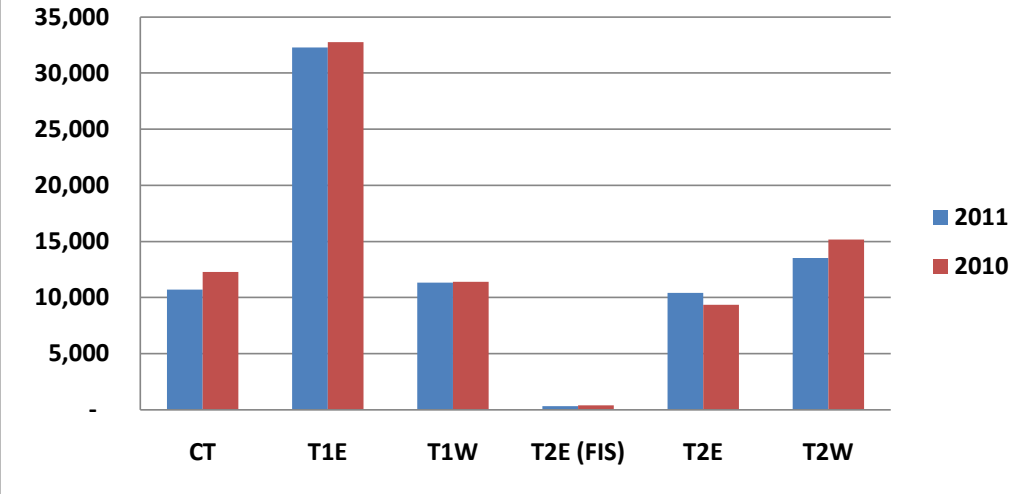
Monthly Operations Trend - 2007 through 2011



Operations by Type (2009 v 2010)



Operations by Terminal Area (2009 v 2010)



Terms and Definitions

Air Carrier (AC)	An aircraft with seating capacity of more than 60 seats or a maximum payload capacity of more than 18,000 pounds carrying passengers or cargo for hire or compensation. This includes US and foreign flagged carriers.	General Aviation (GA)	Takeoffs and landings of all civil aircraft, except those classified as air carriers, air taxis or military.
Air Taxi (AT)	An aircraft with a maximum seating capacity of 60 seats or less or a maximum payload capacity of 18,000 pounds or less carrying passengers or cargo for hire or compensation.	Itinerant Operation	Itinerant operations are operations performed by an aircraft, either IFR, SVFR, or VFR, that lands at an airport, arriving from outside the airport area, or departs an airport and leaves the airport area.
All Cargo	Air Carrier and Air Taxi Operations devoted specifically to the carriage of air cargo.	Mainline	Operations by Major, National and All Cargo Carriers. This includes US and foreign flagged carriers.
FAA Air Traffic Activity	The number of "Itinerant" arrivals and departures from the airport at which the airport traffic control tower is located.	Military (MIL)	All classes of military takeoffs and landings.
Gate Utilization Rate (Operations)	The average number of airline departures per gate, per day.	Regional	Operations conducted by the contracted partners or wholly owned subsidiaries of Mainline Carriers utilizing Regional Jets and Turboprops with 20 or more seats.
Gate Utilization Rate (Passengers)	The average number of passengers per gate, per month or per year.	Schedule Reliability	The number of Scheduled Passenger flights completed versus the number of flights scheduled expressed a percentage.