

San Diego International Airport

Lindbergh Field

Air Traffic Report

May

2011



Air Service Development Department
San Diego County Regional Airport Authority
Post Office Box 82776
San Diego, CA 92138-2776
(619) 400-2875

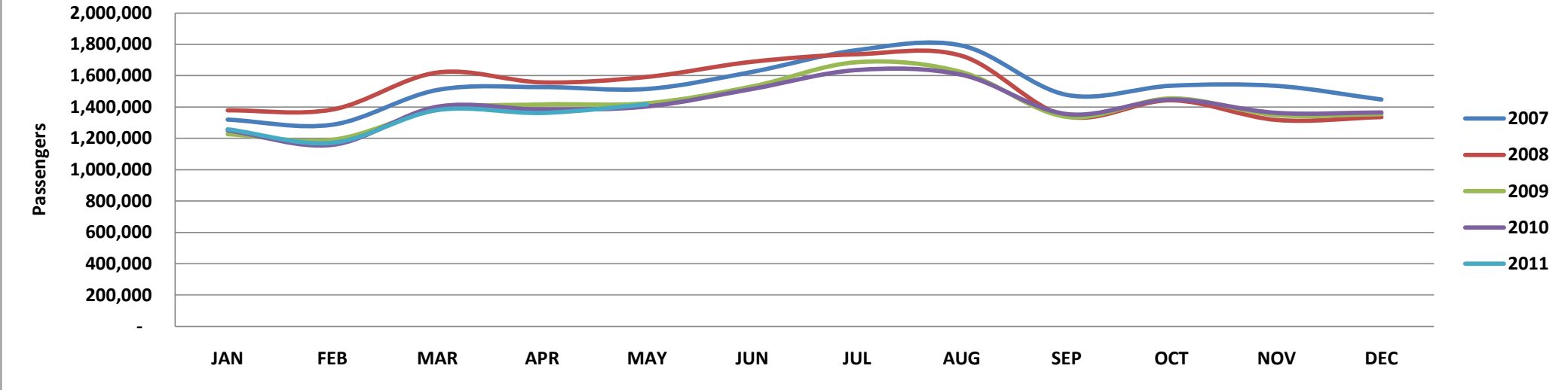
Summary Data

	May				Calendar Year-to-Date			
	2011	2010	Change	% Change	2011	2010	Change	% Change
<u>Domestic Passengers</u>								
Enplaned Passengers	698,515	695,281	3,234	0.5%	3,233,726	3,249,135	(15,409)	-0.5%
Deplaned Passengers	<u>698,080</u>	<u>692,598</u>	<u>5,482</u>	<u>0.8%</u>	<u>3,248,389</u>	<u>3,251,517</u>	<u>(3,128)</u>	<u>-0.1%</u>
Total	1,396,595	1,387,879	8,716	0.6%	6,482,115	6,500,652	(18,537)	-0.3%
<u>International Passengers</u>								
Enplaned Passengers	10,080	7,967	2,113	26.5%	49,516	48,503	1,013	2.1%
Deplaned Passengers	<u>10,168</u>	<u>8,091</u>	<u>2,077</u>	<u>25.7%</u>	<u>55,288</u>	<u>50,484</u>	<u>4,804</u>	<u>9.5%</u>
Total	20,248	16,058	4,190	26.1%	104,804	98,987	5,817	5.9%
<u>Total Passengers</u>								
Enplaned Passengers	708,595	703,248	5,347	0.8%	3,283,242	3,297,638	(14,396)	-0.4%
Deplaned Passengers	<u>708,248</u>	<u>700,689</u>	<u>7,559</u>	<u>1.1%</u>	<u>3,303,677</u>	<u>3,302,001</u>	<u>1,676</u>	<u>0.1%</u>
Total	1,416,843	1,403,937	12,906	0.9%	6,586,919	6,599,639	(12,720)	-0.2%
<u>Domestic Air Cargo Tons</u>								
Enplaned Cargo Tons	4,539.1	4,647.1	(108.0)	-2.3%	22,967.3	22,612.3	355.0	1.6%
Deplaned Cargo Tons	<u>4,504.3</u>	<u>4,443.3</u>	<u>61.0</u>	<u>1.4%</u>	<u>23,143.0</u>	<u>22,022.6</u>	<u>1,120.4</u>	<u>5.1%</u>
Total	9,043.4	9,090.4	(47.0)	-0.5%	46,110.3	44,634.9	1,475.4	3.3%
<u>International Cargo Tons</u>								
Enplaned Cargo Tons	4.9	2.2	2.7	121.8%	28.2	18.2	10.0	54.8%
Deplaned Cargo Tons	<u>-</u>	<u>-</u>	<u>-</u>	<u>0.0%</u>	<u>4.3</u>	<u>1.2</u>	<u>3.1</u>	<u>254.2%</u>
Total	4.9	2.2	2.7	121.8%	32.4	19.4	13.0	67.2%
<u>Total Cargo Tons</u>								
Enplaned Cargo Tons	4,544.0	4,649.3	(105.4)	-2.3%	22,995.5	22,630.5	365.0	1.6%
Deplaned Cargo Tons	<u>4,504.3</u>	<u>4,443.3</u>	<u>61.0</u>	<u>1.4%</u>	<u>23,147.2</u>	<u>22,023.8</u>	<u>1,123.4</u>	<u>5.1%</u>
Total	9,048.3	9,092.6	(44.3)	-0.5%	46,142.7	44,654.3	1,488.4	3.3%
<u>US Mail Tons</u>								
Enplaned US Mail Tons	987.1	925.6	61.5	6.6%	5,149.5	5,145.0	5	0.1%
Deplaned US Mail Tons	<u>262.6</u>	<u>266.6</u>	<u>(4.0)</u>	<u>-1.5%</u>	<u>1,606.9</u>	<u>1,477.9</u>	<u>129</u>	<u>8.7%</u>
Total	1,249.7	1,192.2	57.5	4.8%	6,756.4	6,622.9	134	2.0%
<u>FAA Air Traffic Activity*</u>								
Air Carrier	12,341	12,832	(491)	-3.8%	58,662	59,802	(1,140)	-1.9%
Air Taxi	2,360	2,780	(420)	-15.1%	11,588	12,861	(1,273)	-9.9%
General Aviation	967	1,234	(267)	-21.6%	4,346	4,770	(424)	-8.9%
Military	<u>52</u>	<u>84</u>	<u>(32)</u>	<u>-38.1%</u>	<u>303</u>	<u>468</u>	<u>(165)</u>	<u>-35.3%</u>
Total	15,720	16,930	(1,210)	-7.1%	74,899	77,901	(3,002)	-3.9%
* FAA Aircraft Activity includes "Itinerant Operations" at the airport and will differ from other operational data reported by the airlines. Source: http://aspm.faa.gov/opsnet/sys/Airport.asp								

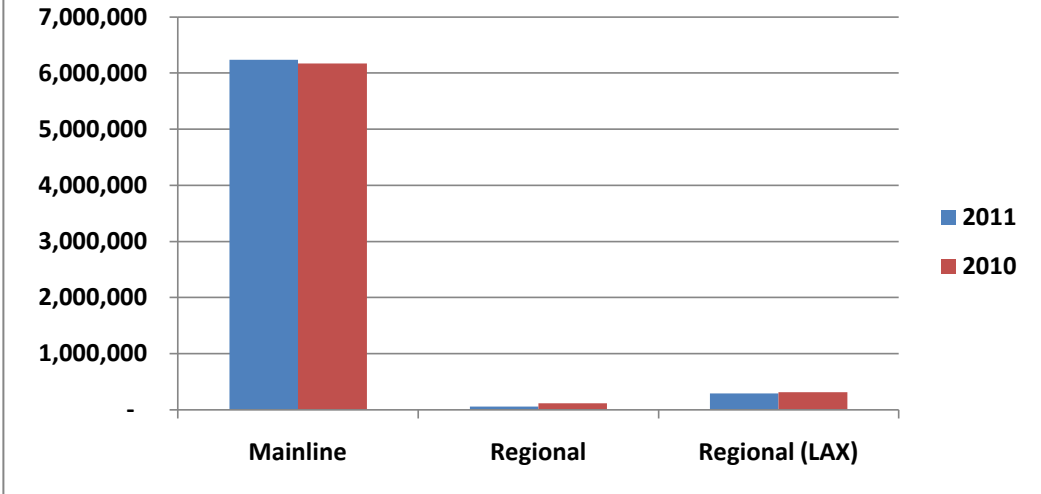
Detailed Passenger Summary

	May				Calendar Year-to-Date			
	2011	2010	% Change	% Share	2011	2010	% Change	% Share
<u>Passengers by Type of Carrier*</u>								
Mainline	1,330,045	1,320,983	0.7%	93.9%	6,168,624	6,094,031	1.2%	93.6%
Mainline (International)	13,554	9,897	37.0%	1.0%	65,431	76,108	-14.0%	1.0%
Regional	14,305	11,366	25.9%	1.0%	57,763	112,643	-48.7%	0.9%
Regional (International)	-	-	0.0%	0.0%	-	-	0.0%	0.0%
Regional (LAX)	58,939	61,691	-4.5%	4.2%	295,101	316,857	-6.9%	4.5%
Total	1,416,843	1,403,937	0.9%	100.0%	6,586,919	6,599,639	-0.2%	100.0%
<u>Passengers by Terminal Area</u>								
Commuter Terminal	58,939	61,691	-4.5%	4.2%	295,101	316,857	-6.9%	4.5%
Terminal 1 East	551,436	531,680	3.7%	38.9%	2,622,834	2,554,826	2.7%	39.8%
Terminal 1 West	234,309	238,008	-1.6%	16.5%	1,115,413	1,150,812	-3.1%	16.9%
Terminal 2 (FIS)	3,383	5,201	-35.0%	0.2%	20,445	32,143	-36.4%	0.3%
Terminal 2 East	223,359	202,114	10.5%	15.8%	1,039,311	926,730	12.1%	15.8%
Terminal 2 West	345,417	365,243	-5.4%	24.4%	1,493,815	1,618,271	-7.7%	22.7%
Total	1,416,843	1,403,937	0.9%	100.0%	6,586,919	6,599,639	-0.2%	100.0%
<u>Gate Utilization Rate (Passengers)</u>								
Commuter Terminal	14,735	15,423	-4.5%		73,775	79,214	-6.9%	
Terminal 1 East	50,131	48,335	3.7%		238,439	232,257	2.7%	
Terminal 1 West	29,289	29,751	-1.6%		139,427	143,852	-3.1%	
Terminal 2 (FIS)	1,128	1,734	-35.0%		6,815	10,714	-36.4%	
Terminal 2 East	22,336	20,211	10.5%		103,931	92,673	12.1%	
Terminal 2 West	38,380	40,583	-5.4%		165,979	179,808	-7.7%	
Net Gate Utilization Rate	31,485	31,199	0.9%		146,376	146,659	-0.2%	
<u>Passengers versus Capacity</u>								
Passengers per Departure	104.6	97.5	7.4%		101.8	98.6	3.2%	
Estimated Seats per Departure**	131.4	128.9	1.9%		130.3	128.3	1.5%	
Estimated Load Factor	79.7%	75.6%	5.4%		78.2%	76.9%	1.7%	
<i>* As reported by the Carriers.</i>								
<i>** Source: APGDat - Airline Planning Data.</i>								

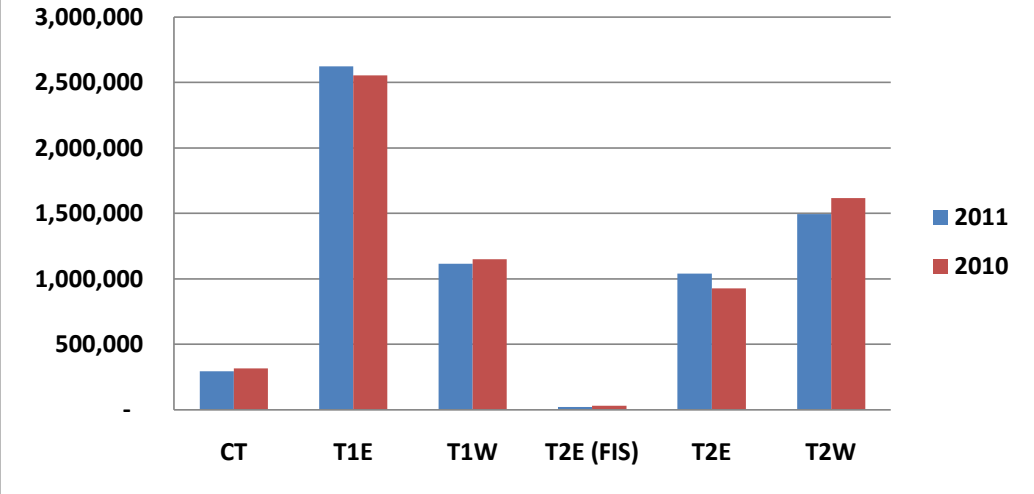
Monthly Passenger Trend - 2007 through 2011



Passengers by Type of Carrier (2009 v 2010)



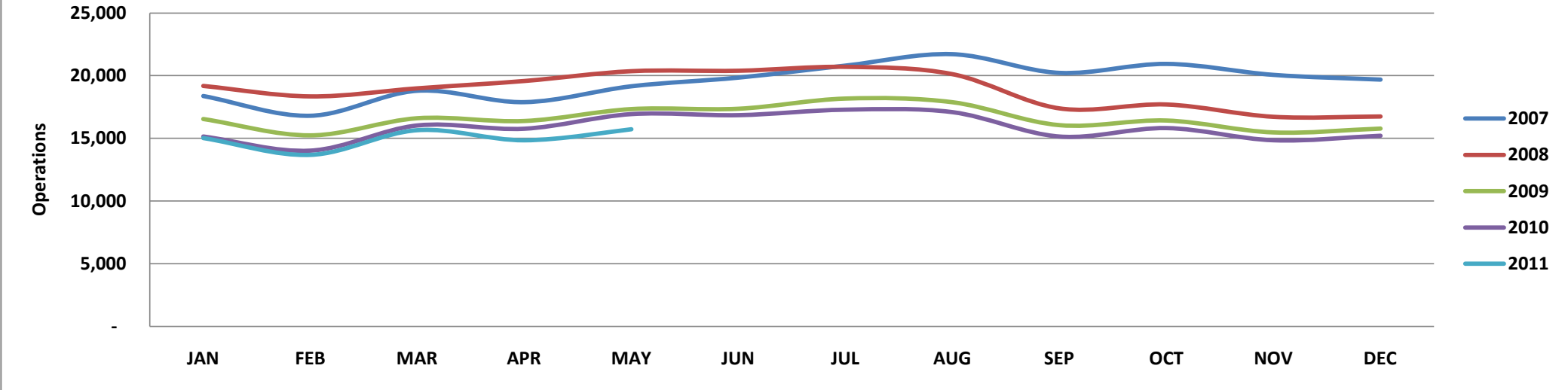
Passengers by Terminal Area (2009 v 2010)



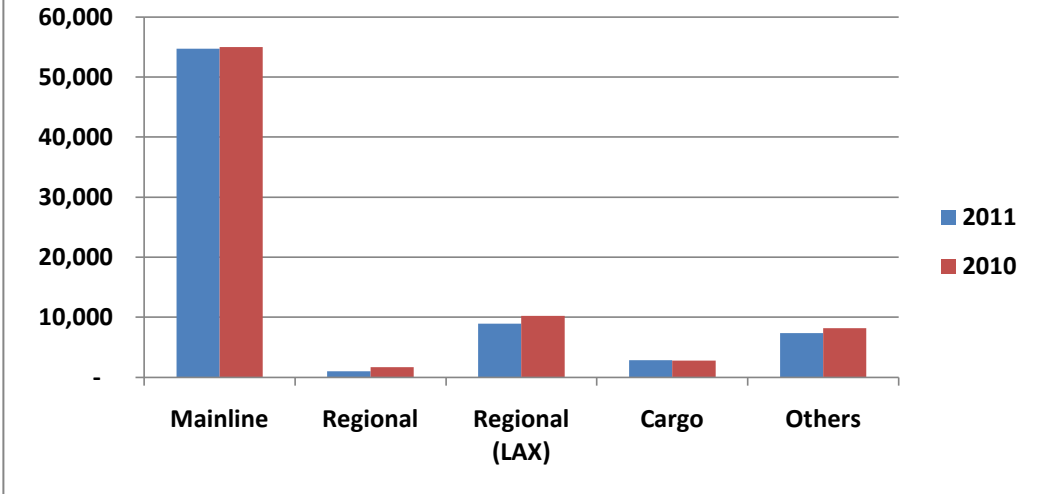
Detailed Operations Summary

	May				Calendar Year-to-Date			
	2011	2010	% Change	% Share	2011	2010	Change	% Share
<u>Operations by Type of Carrier*</u>								
Mainline	11,389	11,856	-3.9%	72.4%	54,016	54,095	-0.1%	72.1%
Mainline (International)	156	115	35.7%	1.0%	732	909	-19.5%	1.0%
Regional	274	176	55.7%	1.7%	1,026	1,664	-38.3%	1.4%
Regional (International)	-	-	0.0%	0.0%	-	-	0.0%	0.0%
Regional (LAX)	1,721	2,258	-23.8%	10.9%	8,918	10,254	-13.0%	11.9%
All Cargo	544	576	-5.6%	3.5%	2,844	2,804	1.4%	3.8%
Other Operations (AC, AT, GA, MIL)	1,636	1,949	-16.1%	10.4%	7,363	8,175	-9.9%	9.8%
Total	15,720	16,930	-7.1%	100.0%	74,899	77,901	-3.9%	100.0%
<u>Operations by Terminal Area</u>								
Commuter Terminal	1,721	2,258	-23.8%	12.7%	8,918	10,254	-13.0%	13.8%
Terminal 1 East	5,598	5,710	-2.0%	41.3%	26,734	27,058	-1.2%	41.3%
Terminal 1 West	1,940	1,969	-1.5%	14.3%	9,391	9,527	-1.4%	14.5%
Terminal 2 (FIS)	44	50	-12.0%	0.3%	274	380	-27.9%	0.4%
Terminal 2 East	1,782	1,650	8.0%	13.2%	8,477	7,524	12.7%	13.1%
Terminal 2 West	2,455	2,768	-11.3%	18.1%	10,898	12,179	-10.5%	16.8%
Total	13,540	14,405	-6.0%	100.0%	64,692	66,922	-3.3%	100.0%
<u>Gate Utilization Rate (Operations)</u>								
Commuter Terminal	6.9	9.1	-23.8%		7.4	8.5	-13.0%	
Terminal 1 East	8.2	8.4	-2.0%		8.0	8.1	-1.2%	
Terminal 1 West	3.9	4.0	-1.5%		3.9	3.9	-1.4%	
Terminal 2 (FIS)	0.2	0.3	-12.0%		0.3	0.4	-27.9%	
Terminal 2 East	2.9	2.7	8.0%		2.8	2.5	12.7%	
Terminal 2 West	4.4	5.0	-11.3%		4.0	4.5	-10.5%	
Net Gate Utilization Rate	4.9	5.2	-6.0%		4.8	4.9	-3.3%	
<u>Passenger Operations Schedule Reliability</u>								
Scheduled Passenger Operations	13,679	14,474	-5.5%		65,372	67,643	-3.4%	
Actual Passenger Operations	13,540	14,405	-6.0%		64,692	66,922	-3.3%	
Net Schedule Reliability	99.0%	99.5%	-0.5%		99.0%	98.9%	0.0%	
* As reported by the Carriers and the FAA.								

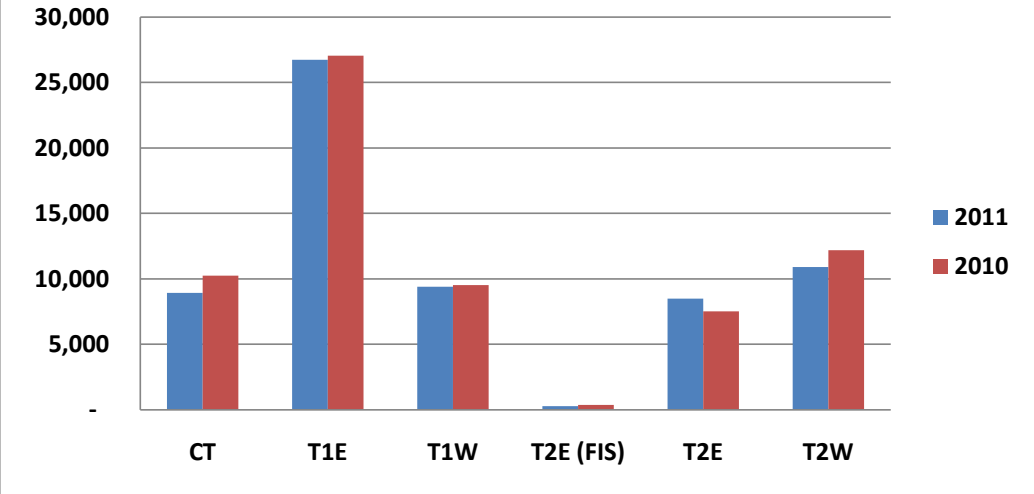
Monthly Operations Trend - 2007 through 2011



Operations by Type (2009 v 2010)



Operations by Terminal Area (2009 v 2010)



Terms and Definitions

Air Carrier (AC)	An aircraft with seating capacity of more than 60 seats or a maximum payload capacity of more than 18,000 pounds carrying passengers or cargo for hire or compensation. This includes US and foreign flagged carriers.	General Aviation (GA)	Takeoffs and landings of all civil aircraft, except those classified as air carriers, air taxis or military.
Air Taxi (AT)	An aircraft with a maximum seating capacity of 60 seats or less or a maximum payload capacity of 18,000 pounds or less carrying passengers or cargo for hire or compensation.	Itinerant Operation	Itinerant operations are operations performed by an aircraft, either IFR, SVFR, or VFR, that lands at an airport, arriving from outside the airport area, or departs an airport and leaves the airport area.
All Cargo	Air Carrier and Air Taxi Operations devoted specifically to the carriage of air cargo.	Mainline	Operations by Major, National and All Cargo Carriers. This includes US and foreign flagged carriers.
FAA Air Traffic Activity	The number of "Itinerant" arrivals and departures from the airport at which the airport traffic control tower is located.	Military (MIL)	All classes of military takeoffs and landings.
Gate Utilization Rate (Operations)	The average number of airline departures per gate, per day.	Regional	Operations conducted by the contracted partners or wholly owned subsidiaries of Mainline Carriers utilizing Regional Jets and Turboprops with 20 or more seats.
Gate Utilization Rate (Passengers)	The average number of passengers per gate, per month or per year.	Schedule Reliability	The number of Scheduled Passenger flights completed versus the number of flights scheduled expressed a percentage.