

# San Diego International Airport

Lindbergh Field

## Air Traffic Report

November

2011



**Air Service Development Department**  
San Diego County Regional Airport Authority  
Post Office Box 82776  
San Diego, CA 92138-2776  
(619) 400-2875

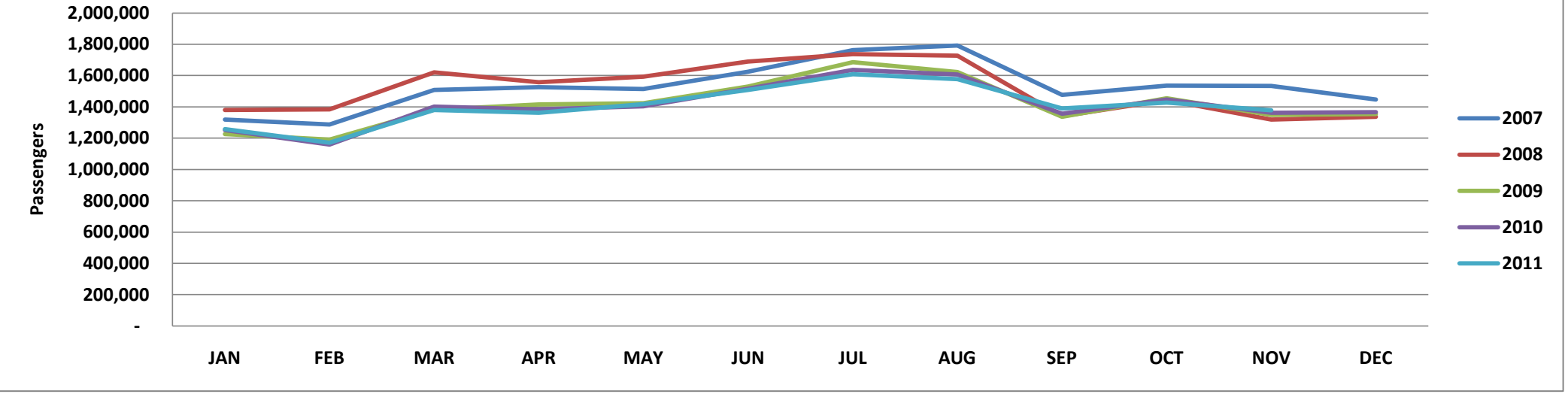
### Summary Data

	November				Calendar Year-to-Date			
	2011	2010	Change	% Change	2011	2010	Change	% Change
<b><u>Domestic Passengers</u></b>								
Enplaned Passengers	667,824	679,001	(11,177)	-1.6%	7,555,424	7,663,074	(107,650)	-1.4%
Deplaned Passengers	<u>671,477</u>	<u>665,070</u>	<u>6,407</u>	<u>1.0%</u>	<u>7,560,415</u>	<u>7,647,400</u>	<u>(86,985)</u>	<u>-1.1%</u>
<b>Total</b>	1,339,301	1,344,071	(4,770)	-0.4%	15,115,839	15,310,474	(194,635)	-1.3%
<b><u>International Passengers</u></b>								
Enplaned Passengers	18,415	9,418	8,997	95.5%	172,890	105,897	66,993	63.3%
Deplaned Passengers	<u>20,359</u>	<u>9,470</u>	<u>10,889</u>	<u>115.0%</u>	<u>187,904</u>	<u>107,434</u>	<u>80,470</u>	<u>74.9%</u>
<b>Total</b>	38,774	18,888	19,886	105.3%	360,794	213,331	147,463	69.1%
<b><u>Total Passengers</u></b>								
Enplaned Passengers	686,239	688,419	(2,180)	-0.3%	7,728,314	7,768,971	(40,657)	-0.5%
Deplaned Passengers	<u>691,836</u>	<u>674,540</u>	<u>17,296</u>	<u>2.6%</u>	<u>7,748,319</u>	<u>7,754,834</u>	<u>(6,515)</u>	<u>-0.1%</u>
<b>Total</b>	1,378,075	1,362,959	15,116	1.1%	15,476,633	15,523,805	(47,172)	-0.3%
<b><u>Domestic Air Cargo Tons</u></b>								
Enplaned Cargo Tons	4,538.3	4,449.3	89.0	2.0%	51,350.4	50,258.1	1,092.3	2.2%
Deplaned Cargo Tons	<u>4,542.3</u>	<u>4,753.2</u>	<u>(210.9)</u>	<u>-4.4%</u>	<u>50,980.9</u>	<u>50,519.1</u>	<u>461.8</u>	<u>0.9%</u>
<b>Total</b>	9,080.6	9,202.5	(121.9)	-1.3%	102,331.2	100,777.2	1,554.0	1.5%
<b><u>International Cargo Tons</u></b>								
Enplaned Cargo Tons	347.1	4.9	342.2	7026.3%	1,787.6	41.5	1,746.1	4207.3%
Deplaned Cargo Tons	<u>3.9</u>	<u>3.2</u>	<u>0.7</u>	<u>20.9%</u>	<u>296.6</u>	<u>4.5</u>	<u>292.1</u>	<u>6432.8%</u>
<b>Total</b>	350.9	8.1	342.9	4248.5%	2,084.1	46.0	2,038.1	4426.8%
<b><u>Total Cargo Tons</u></b>								
Enplaned Cargo Tons	4,885.3	4,454.1	431.2	9.7%	53,137.9	50,299.6	2,838.3	5.6%
Deplaned Cargo Tons	<u>4,546.2</u>	<u>4,756.4</u>	<u>(210.2)</u>	<u>-4.4%</u>	<u>51,277.5</u>	<u>50,523.6</u>	<u>753.8</u>	<u>1.5%</u>
<b>Total</b>	9,431.5	9,210.5	220.9	2.4%	104,415.4	100,823.2	3,592.1	3.6%
<b><u>US Mail Tons</u></b>								
Enplaned US Mail Tons	1,052.3	986.6	65.6	6.7%	11,414.8	11,489.9	(75)	-0.7%
Deplaned US Mail Tons	<u>298.2</u>	<u>287.2</u>	<u>11.0</u>	<u>3.8%</u>	<u>3,284.1</u>	<u>3,018.7</u>	<u>265</u>	<u>8.8%</u>
<b>Total</b>	1,350.4	1,273.8	76.6	6.0%	14,698.9	14,508.6	190	1.3%
<b><u>FAA Air Traffic Activity*</u></b>								
Air Carrier	11,942	11,676	266	2.3%	134,386	135,719	(1,333)	-1.0%
Air Taxi	2,135	2,257	(122)	-5.4%	24,780	27,512	(2,732)	-9.9%
General Aviation	831	862	(31)	-3.6%	9,713	10,835	(1,122)	-10.4%
Military	<u>61</u>	<u>55</u>	<u>6</u>	<u>10.9%</u>	<u>657</u>	<u>862</u>	<u>(205)</u>	<u>-23.8%</u>
<b>Total</b>	14,969	14,850	119	0.8%	169,536	174,928	(5,392)	-3.1%
* FAA Aircraft Activity includes "Itinerant Operations" at the airport and will differ from other operational data reported by the airlines. <b>Source:</b> <a href="http://aspm.faa.gov/opsnet/sys/Airport.asp">http://aspm.faa.gov/opsnet/sys/Airport.asp</a>								

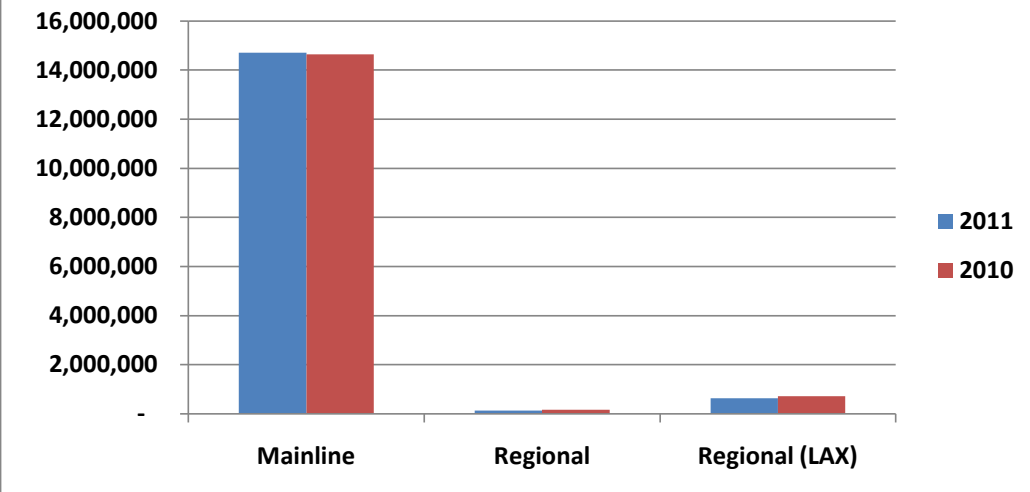
## Detailed Passenger Summary

	November				Calendar Year-to-Date			
	2011	2010	% Change	% Share	2011	2010	% Change	% Share
<b><u>Passengers by Type of Carrier*</u></b>								
Mainline	1,284,250	1,285,147	-0.1%	93.2%	14,430,746	14,494,943	-0.4%	93.2%
Mainline (International)	31,401	12,636	148.5%	2.3%	280,697	153,489	82.9%	1.8%
Regional	10,126	3,215	215.0%	0.7%	127,634	162,965	-21.7%	0.8%
Regional (International)	-	-	0.0%	0.0%	-	-	0.0%	0.0%
Regional (LAX)	52,298	61,961	-15.6%	3.8%	637,556	712,408	-10.5%	4.1%
<b>Total</b>	1,378,075	1,362,959	1.1%	100.0%	15,476,633	15,523,805	-0.3%	100.0%
<b><u>Passengers by Terminal Area</u></b>								
Commuter Terminal	52,298	61,961	-15.6%	3.8%	637,556	712,408	-10.5%	4.1%
Terminal 1 East	532,686	545,004	-2.3%	38.7%	5,963,775	5,947,780	0.3%	38.5%
Terminal 1 West	226,789	237,461	-4.5%	16.5%	2,537,733	2,623,536	-3.3%	16.4%
Terminal 2 (FIS)	13,877	3,208	332.6%	1.0%	109,147	51,129	113.5%	0.7%
Terminal 2 East	249,018	195,300	27.5%	18.1%	2,617,164	2,285,413	14.5%	16.9%
Terminal 2 West	303,407	320,025	-5.2%	22.0%	3,611,258	3,903,539	-7.5%	23.3%
<b>Total</b>	1,378,075	1,362,959	1.1%	100.0%	15,476,633	15,523,805	-0.3%	100.0%
<b><u>Gate Utilization Rate (Passengers)</u></b>								
Commuter Terminal	13,075	15,490	-15.6%		159,389	178,102	-10.5%	
Terminal 1 East	48,426	49,546	-2.3%		542,161	540,707	0.3%	
Terminal 1 West	28,349	29,683	-4.5%		317,217	327,942	-3.3%	
Terminal 2 (FIS)	4,626	1,069	332.6%		36,382	17,043	113.5%	
Terminal 2 East	24,902	19,530	27.5%		261,716	228,541	14.5%	
Terminal 2 West	33,712	35,558	-5.2%		401,251	433,727	-7.5%	
<b>Net Gate Utilization Rate</b>	30,624	30,288	1.1%		343,925	344,973	-0.3%	
<b><u>Passengers versus Capacity</u></b>								
Passengers per Departure	107.8	106.9	0.8%		106.3	103.6	2.6%	
Estimated Seats per Departure**	133.3	131.5	1.4%		131.9	130.0	1.4%	
<b>Estimated Load Factor</b>	80.9%	81.3%	-0.5%		80.6%	79.7%	1.2%	
<b>* As reported by the Carriers.</b>								
<b>** Source: APGDat - Airline Planning Data.</b>								

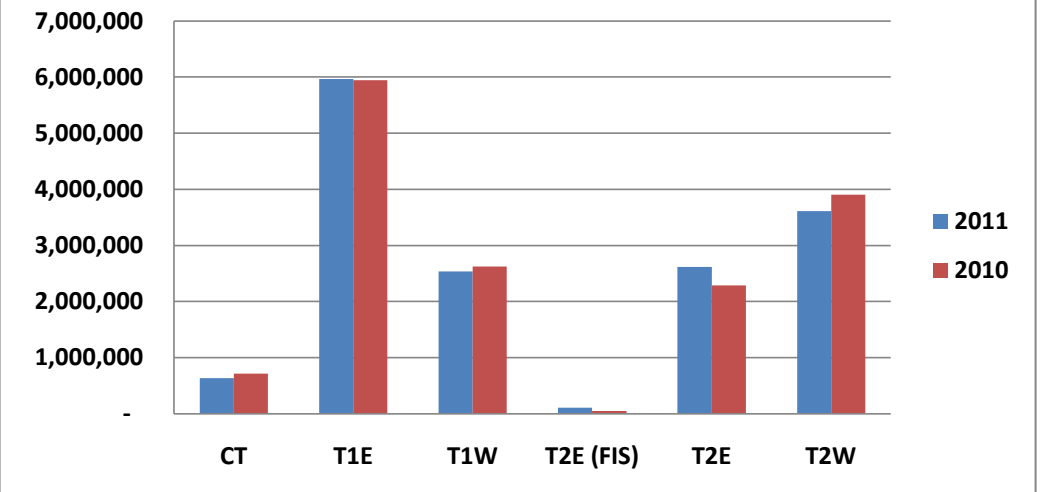
**Monthly Passenger Trend - 2007 through 2011**



**Passengers by Type of Carrier (2009 v 2010)**



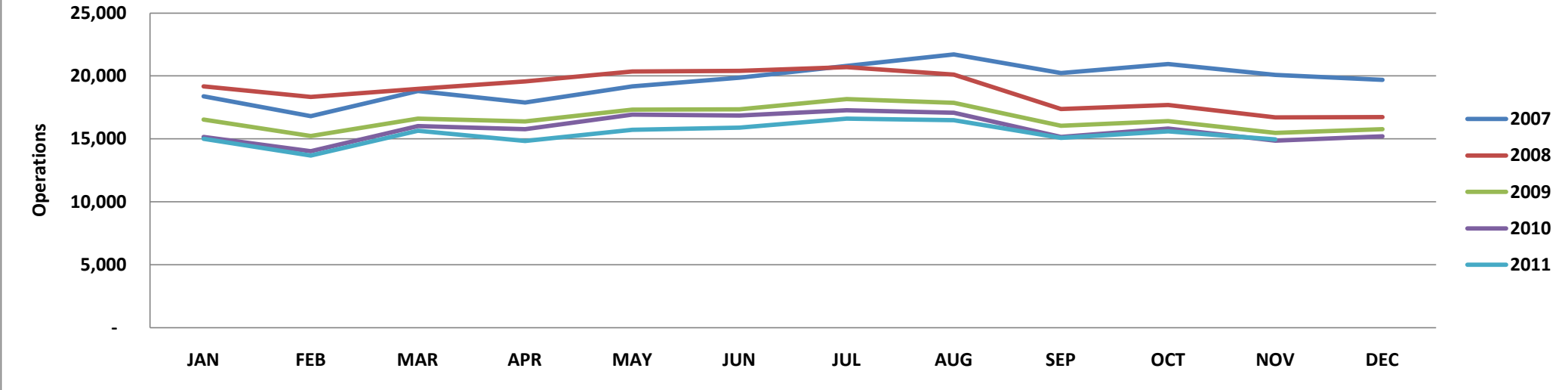
**Passengers by Terminal Area (2009 v 2010)**



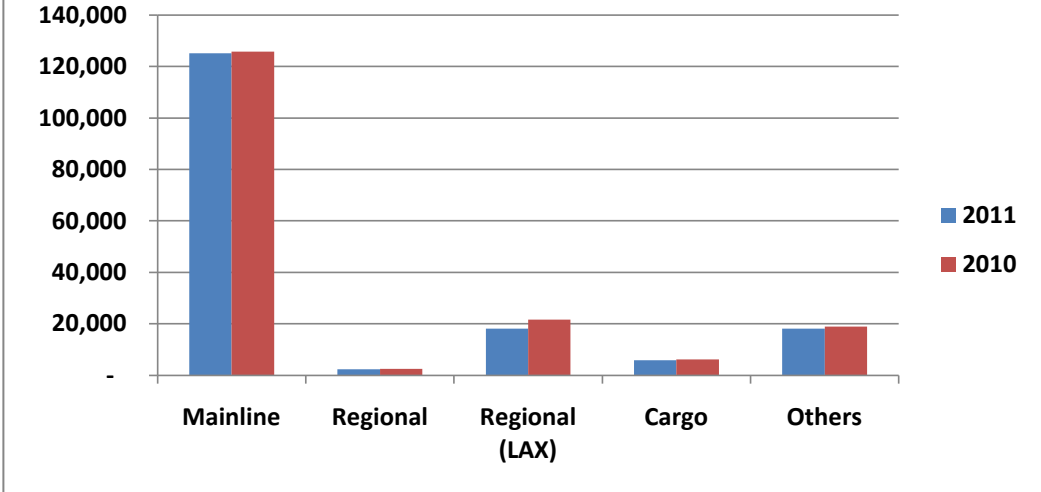
## Detailed Operations Summary

	November				Calendar Year-to-Date			
	2011	2010	% Change	% Share	2011	2010	Change	% Share
<b><u>Operations by Type of Carrier*</u></b>								
Mainline	10,748	10,793	-0.4%	71.8%	122,659	123,910	-1.0%	72.3%
Mainline (International)	316	146	116.4%	2.1%	2,478	1,791	38.4%	1.5%
Regional	258	60	330.0%	1.7%	2,264	2,482	-8.8%	1.3%
Regional (International)	-	-	0.0%	0.0%	-	-	0.0%	0.0%
Regional (LAX)	1,460	1,750	-16.6%	9.8%	18,155	21,660	-16.2%	10.7%
All Cargo	474	506	-6.3%	3.2%	5,904	6,132	-3.7%	3.5%
Other Operations (AC, AT, GA, MIL)	1,713	1,595	7.4%	11.4%	18,076	18,953	-4.6%	10.7%
<b>Total</b>	14,969	14,850	0.8%	100.0%	169,536	174,928	-3.1%	100.0%
<b><u>Operations by Terminal Area</u></b>								
Commuter Terminal	1,460	1,750	-16.6%	11.4%	18,155	21,660	-16.2%	12.5%
Terminal 1 East	5,134	5,230	-1.8%	40.2%	59,372	60,338	-1.6%	40.8%
Terminal 1 West	1,909	1,858	2.7%	14.9%	20,921	20,712	1.0%	14.4%
Terminal 2 (FIS)	126	49	157.1%	1.0%	867	582	49.0%	0.6%
Terminal 2 East	1,995	1,545	29.1%	15.6%	20,707	17,900	15.7%	14.2%
Terminal 2 West	2,158	2,317	-6.9%	16.9%	25,534	28,651	-10.9%	17.5%
<b>Total</b>	12,782	12,749	0.3%	100.0%	145,556	149,843	-2.9%	100.0%
<b><u>Gate Utilization Rate (Operations)</u></b>								
Commuter Terminal	6.1	7.3	-16.6%		6.8	8.1	-16.2%	
Terminal 1 East	7.8	7.9	-1.8%		8.1	8.2	-1.6%	
Terminal 1 West	4.0	3.9	2.7%		3.9	3.9	1.0%	
Terminal 2 (FIS)	0.7	0.3	157.1%		0.4	0.3	49.0%	
Terminal 2 East	3.3	2.6	29.1%		3.1	2.7	15.7%	
Terminal 2 West	4.0	4.3	-6.9%		4.2	4.8	-10.9%	
<b>Net Gate Utilization Rate</b>	4.7	4.7	0.3%		4.8	5.0	-2.9%	
<b><u>Passenger Operations Schedule Reliability</u></b>								
Scheduled Passenger Operations	12,808	12,830	-0.2%		147,528	150,990	-2.3%	
Actual Passenger Operations	12,782	12,749	0.3%		145,556	149,843	-2.9%	
<b>Net Schedule Reliability</b>	99.8%	99.4%	0.4%		98.7%	99.2%	-0.6%	
<b>* As reported by the Carriers and the FAA.</b>								

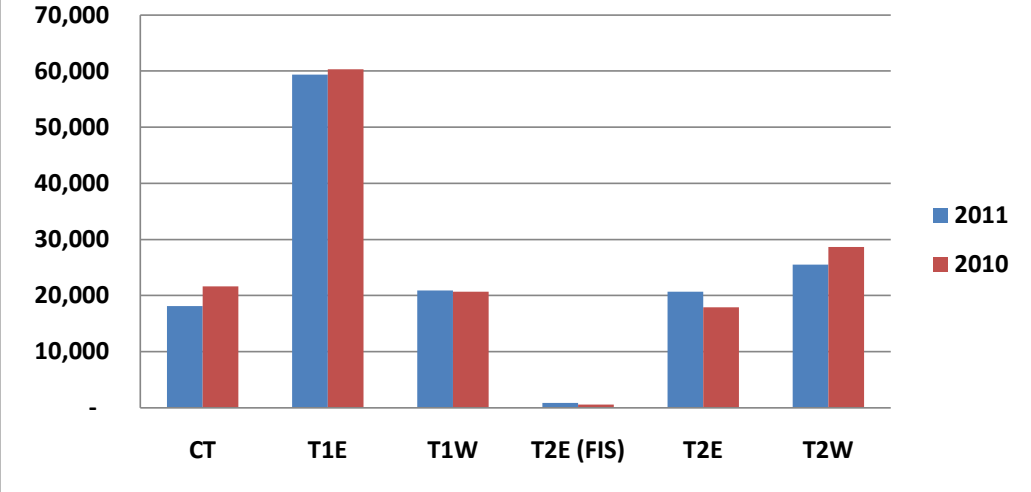
**Monthly Operations Trend - 2007 through 2011**



**Operations by Type (2009 v 2010)**



**Operations by Terminal Area (2009 v 2010)**



## Terms and Definitions

<b>Air Carrier (AC)</b>	An aircraft with seating capacity of more than 60 seats or a maximum payload capacity of more than 18,000 pounds carrying passengers or cargo for hire or compensation. This includes US and foreign flagged carriers.	<b>General Aviation (GA)</b>	Takeoffs and landings of all civil aircraft, except those classified as air carriers, air taxis or military.
<b>Air Taxi (AT)</b>	An aircraft with a maximum seating capacity of 60 seats or less or a maximum payload capacity of 18,000 pounds or less carrying passengers or cargo for hire or compensation.	<b>Itinerant Operation</b>	Itinerant operations are operations performed by an aircraft, either IFR, SVFR, or VFR, that lands at an airport, arriving from outside the airport area, or departs an airport and leaves the airport area.
<b>All Cargo</b>	Air Carrier and Air Taxi Operations devoted specifically to the carriage of air cargo.	<b>Mainline</b>	Operations by Major, National and All Cargo Carriers. This includes US and foreign flagged carriers.
<b>FAA Air Traffic Activity</b>	The number of "Itinerant" arrivals and departures from the airport at which the airport traffic control tower is located.	<b>Military (MIL)</b>	All classes of military takeoffs and landings.
<b>Gate Utilization Rate (Operations)</b>	The average number of airline departures per gate, per day.	<b>Regional</b>	Operations conducted by the contracted partners or wholly owned subsidiaries of Mainline Carriers utilizing Regional Jets and Turboprops with 20 or more seats.
<b>Gate Utilization Rate (Passengers)</b>	The average number of passengers per gate, per month or per year.	<b>Schedule Reliability</b>	The number of Scheduled Passenger flights completed versus the number of flights scheduled expressed a percentage.