

San Diego International Airport

Lindbergh Field

Air Traffic Report

October

2011



Air Service Development Department
San Diego County Regional Airport Authority
Post Office Box 82776
San Diego, CA 92138-2776
(619) 400-2875

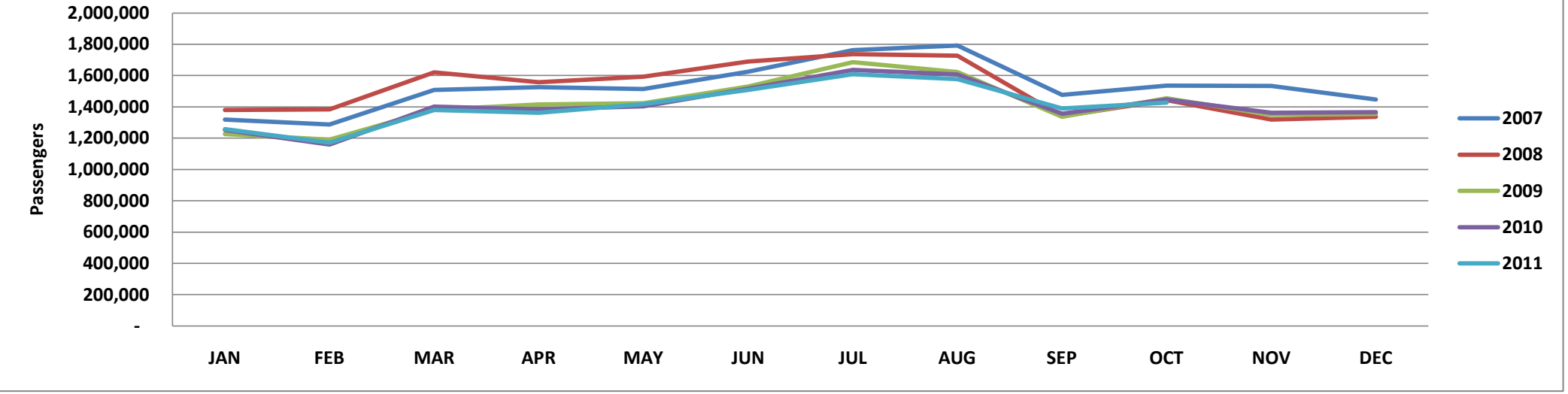
Summary Data

	October				Calendar Year-to-Date			
	2011	2010	Change	% Change	2011	2010	Change	% Change
<u>Domestic Passengers</u>								
Enplaned Passengers	690,423	712,111	(21,688)	-3.0%	6,887,600	6,984,073	(96,473)	-1.4%
Deplaned Passengers	<u>692,177</u>	<u>715,981</u>	<u>(23,804)</u>	<u>-3.3%</u>	<u>6,888,938</u>	<u>6,982,330</u>	<u>(93,392)</u>	<u>-1.3%</u>
Total	1,382,600	1,428,092	(45,492)	-3.2%	13,776,538	13,966,403	(189,865)	-1.4%
<u>International Passengers</u>								
Enplaned Passengers	21,533	9,972	11,561	115.9%	154,475	96,479	57,996	60.1%
Deplaned Passengers	<u>23,035</u>	<u>9,688</u>	<u>13,347</u>	<u>137.8%</u>	<u>167,545</u>	<u>97,964</u>	<u>69,581</u>	<u>71.0%</u>
Total	44,568	19,660	24,908	126.7%	322,020	194,443	127,577	65.6%
<u>Total Passengers</u>								
Enplaned Passengers	711,956	722,083	(10,127)	-1.4%	7,042,075	7,080,552	(38,477)	-0.5%
Deplaned Passengers	<u>715,212</u>	<u>725,669</u>	<u>(10,457)</u>	<u>-1.4%</u>	<u>7,056,483</u>	<u>7,080,294</u>	<u>(23,811)</u>	<u>-0.3%</u>
Total	1,427,168	1,447,752	(20,584)	-1.4%	14,098,558	14,160,846	(62,288)	-0.4%
<u>Domestic Air Cargo Tons</u>								
Enplaned Cargo Tons	4,734.0	4,743.8	(9.8)	-0.2%	46,812.1	45,808.8	1,003.3	2.2%
Deplaned Cargo Tons	<u>4,695.3</u>	<u>4,769.4</u>	<u>(74.1)</u>	<u>-1.6%</u>	<u>46,438.6</u>	<u>45,765.9</u>	<u>672.7</u>	<u>1.5%</u>
Total	9,429.3	9,513.2	(83.9)	-0.9%	93,250.7	91,574.7	1,675.9	1.8%
<u>International Cargo Tons</u>								
Enplaned Cargo Tons	226.3	3.8	222.5	5902.4%	1,440.5	36.6	1,403.9	3832.6%
Deplaned Cargo Tons	<u>138.2</u>	<u>0.1</u>	<u>138.0</u>	<u>100.0%</u>	<u>292.7</u>	<u>1.3</u>	<u>291.4</u>	<u>21744.8%</u>
Total	364.5	3.9	360.6	9221.5%	1,733.2	38.0	1,695.3	4464.7%
<u>Total Cargo Tons</u>								
Enplaned Cargo Tons	4,960.3	4,747.6	212.7	4.5%	48,252.6	45,845.5	2,407.1	5.3%
Deplaned Cargo Tons	<u>4,833.5</u>	<u>4,769.5</u>	<u>64.0</u>	<u>1.3%</u>	<u>46,731.3</u>	<u>45,767.2</u>	<u>964.1</u>	<u>2.1%</u>
Total	9,793.8	9,517.1	276.7	2.9%	94,983.9	91,612.7	3,371.2	3.7%
<u>US Mail Tons</u>								
Enplaned US Mail Tons	1,143.0	1,351.1	(208.0)	-15.4%	10,362.6	10,503.3	(141)	-1.3%
Deplaned US Mail Tons	<u>250.7</u>	<u>310.2</u>	<u>(59.5)</u>	<u>-19.2%</u>	<u>2,985.9</u>	<u>2,731.5</u>	<u>254</u>	<u>9.3%</u>
Total	1,393.7	1,661.3	(267.6)	-16.1%	13,348.5	13,234.8	114	0.9%
<u>FAA Air Traffic Activity*</u>								
Air Carrier	12,577	12,439	138	1.1%	122,444	124,043	(1,599)	-1.3%
Air Taxi	2,101	2,367	(266)	-11.2%	22,645	25,255	(2,610)	-10.3%
General Aviation	875	923	(48)	-5.2%	8,882	9,973	(1,091)	-10.9%
Military	<u>51</u>	<u>89</u>	<u>(38)</u>	<u>-42.7%</u>	<u>596</u>	<u>807</u>	<u>(211)</u>	<u>-26.1%</u>
Total	15,604	15,818	(214)	-1.4%	154,567	160,078	(5,511)	-3.4%
* FAA Aircraft Activity includes "Itinerant Operations" at the airport and will differ from other operational data reported by the airlines. Source: http://aspm.faa.gov/opsnet/sys/Airport.asp								

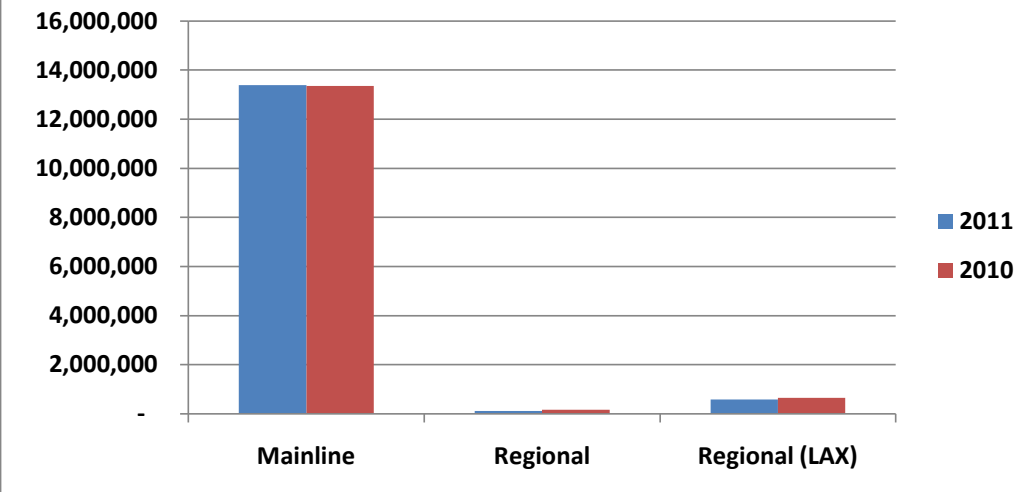
Detailed Passenger Summary

	October				Calendar Year-to-Date			
	2011	2010	% Change	% Share	2011	2010	% Change	% Share
<u>Passengers by Type of Carrier*</u>								
Mainline	1,324,464	1,364,212	-2.9%	92.8%	13,146,496	13,209,796	-0.5%	93.2%
Mainline (International)	38,722	13,598	184.8%	2.7%	249,296	140,853	77.0%	1.8%
Regional	10,330	5,423	90.5%	0.7%	117,508	159,750	-26.4%	0.8%
Regional (International)	-	-	0.0%	0.0%	-	-	0.0%	0.0%
Regional (LAX)	53,652	64,519	-16.8%	3.8%	585,258	650,447	-10.0%	4.2%
Total	1,427,168	1,447,752	-1.4%	100.0%	14,098,558	14,160,846	-0.4%	100.0%
<u>Passengers by Terminal Area</u>								
Commuter Terminal	53,652	64,519	-16.8%	3.8%	585,258	650,447	-10.0%	4.2%
Terminal 1 East	531,669	564,715	-5.9%	37.3%	5,431,089	5,402,776	0.5%	38.5%
Terminal 1 West	233,858	251,151	-6.9%	16.4%	2,310,944	2,386,075	-3.1%	16.4%
Terminal 2 (FIS)	15,438	3,041	407.7%	1.1%	95,270	47,921	98.8%	0.7%
Terminal 2 East	270,944	209,185	29.5%	19.0%	2,368,146	2,090,113	13.3%	16.8%
Terminal 2 West	321,607	355,141	-9.4%	22.5%	3,307,851	3,583,514	-7.7%	23.5%
Total	1,427,168	1,447,752	-1.4%	100.0%	14,098,558	14,160,846	-0.4%	100.0%
<u>Gate Utilization Rate (Passengers)</u>								
Commuter Terminal	13,413	16,130	-16.8%		146,315	162,612	-10.0%	
Terminal 1 East	48,334	51,338	-5.9%		493,735	491,161	0.5%	
Terminal 1 West	29,232	31,394	-6.9%		288,868	298,259	-3.1%	
Terminal 2 (FIS)	5,146	1,014	407.7%		31,757	15,974	98.8%	
Terminal 2 East	27,094	20,919	29.5%		236,815	209,011	13.3%	
Terminal 2 West	35,734	39,460	-9.4%		367,539	398,168	-7.7%	
Net Gate Utilization Rate	31,715	32,172	-1.4%		313,301	314,685	-0.4%	
<u>Passengers versus Capacity</u>								
Passengers per Departure	106.6	107.3	-0.7%		106.2	103.3	2.8%	
Estimated Seats per Departure**	134.0	132.5	1.2%		131.8	129.9	1.4%	
Estimated Load Factor	79.6%	81.0%	-1.8%		80.6%	79.5%	1.3%	
* As reported by the Carriers.								
** Source: APGDat - Airline Planning Data.								

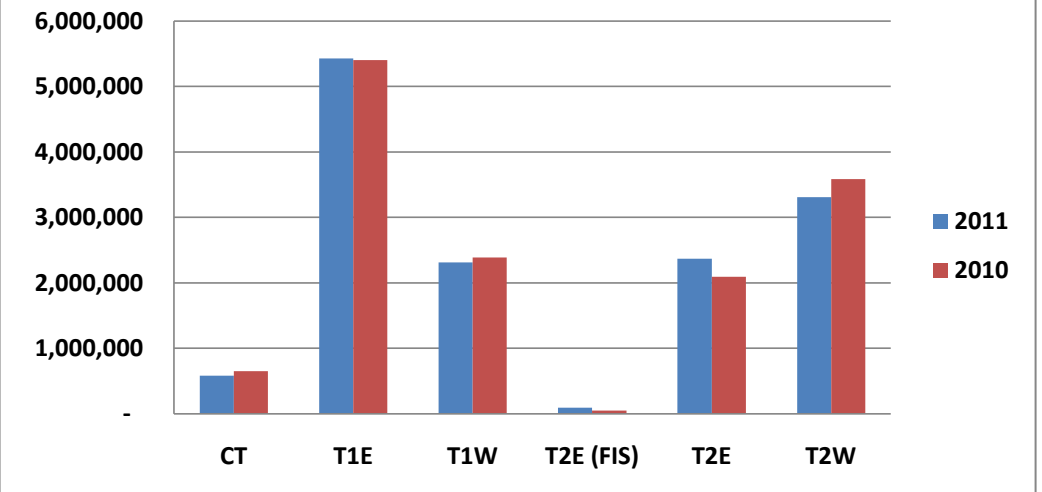
Monthly Passenger Trend - 2007 through 2011



Passengers by Type of Carrier (2011 v 2010)



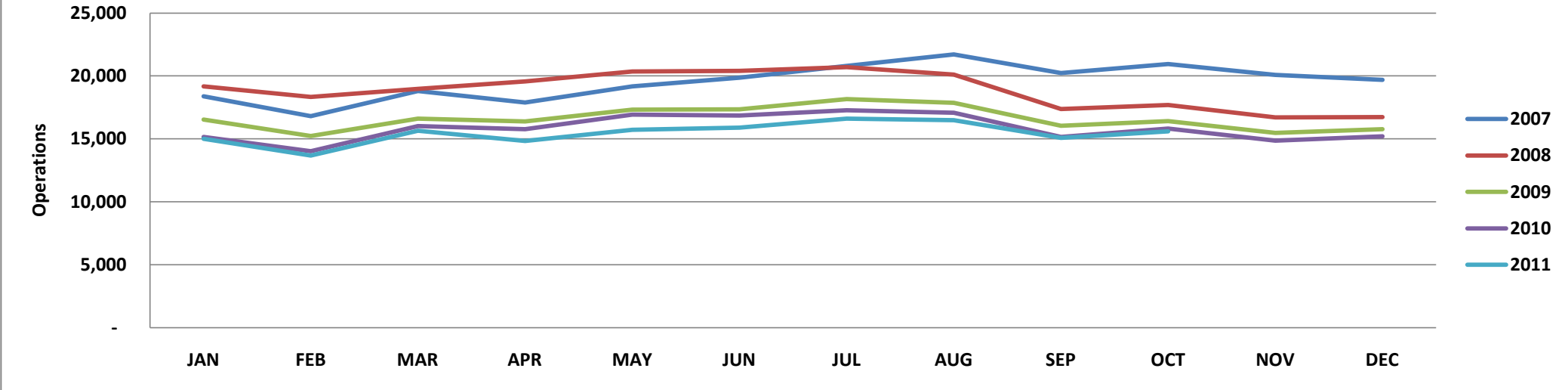
Passengers by Terminal Area (2011 v 2010)



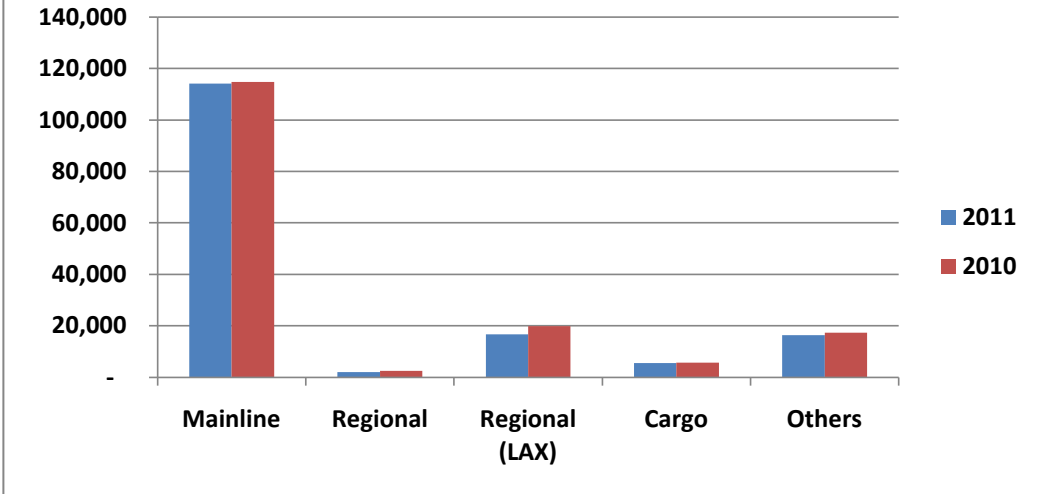
Detailed Operations Summary

	October				Calendar Year-to-Date			
	2011	2010	% Change	% Share	2011	2010	Change	% Share
<u>Operations by Type of Carrier*</u>								
Mainline	11,295	11,403	-0.9%	72.4%	111,911	113,117	-1.1%	72.4%
Mainline (International)	340	158	115.2%	2.2%	2,162	1,645	31.4%	1.4%
Regional	186	68	173.5%	1.2%	2,006	2,422	-17.2%	1.3%
Regional (International)	-	-	0.0%	0.0%	-	-	0.0%	0.0%
Regional (LAX)	1,564	1,858	-15.8%	10.0%	16,695	19,910	-16.1%	10.8%
All Cargo	478	594	-19.5%	3.1%	5,430	5,626	-3.5%	3.5%
Other Operations (AC, AT, GA, MIL)	1,741	1,737	0.2%	11.2%	16,363	17,358	-5.7%	10.6%
Total	15,604	15,818	-1.4%	100.0%	154,567	160,078	-3.4%	100.0%
<u>Operations by Terminal Area</u>								
Commuter Terminal	1,564	1,858	-15.8%	11.7%	16,695	19,910	-16.1%	12.6%
Terminal 1 East	5,392	5,512	-2.2%	40.3%	54,238	55,108	-1.6%	40.8%
Terminal 1 West	1,900	1,903	-0.2%	14.2%	19,012	18,854	0.8%	14.3%
Terminal 2 (FIS)	116	31	274.2%	0.9%	741	533	39.0%	0.6%
Terminal 2 East	2,125	1,602	32.6%	15.9%	18,712	16,355	14.4%	14.1%
Terminal 2 West	2,288	2,581	-11.4%	17.1%	23,376	26,334	-11.2%	17.6%
Total	13,385	13,487	-0.8%	100.0%	132,774	137,094	-3.2%	100.0%
<u>Gate Utilization Rate (Operations)</u>								
Commuter Terminal	6.3	7.5	-15.8%		6.9	8.2	-16.1%	
Terminal 1 East	7.9	8.1	-2.2%		8.1	8.2	-1.6%	
Terminal 1 West	3.8	3.8	-0.2%		3.9	3.9	0.8%	
Terminal 2 (FIS)	0.6	0.2	274.2%		0.4	0.3	39.0%	
Terminal 2 East	3.4	2.6	32.6%		3.1	2.7	14.4%	
Terminal 2 West	4.1	4.6	-11.4%		4.3	4.8	-11.2%	
Net Gate Utilization Rate	4.8	4.8	-0.8%		4.9	5.0	-3.2%	
<u>Passenger Operations Schedule Reliability</u>								
Scheduled Passenger Operations	13,504	13,562	-0.4%		134,720	138,160	-2.5%	
Actual Passenger Operations	13,385	13,487	-0.8%		132,774	137,094	-3.2%	
Net Schedule Reliability	99.1%	99.4%	-0.3%		98.6%	99.2%	-0.7%	
* As reported by the Carriers and the FAA.								

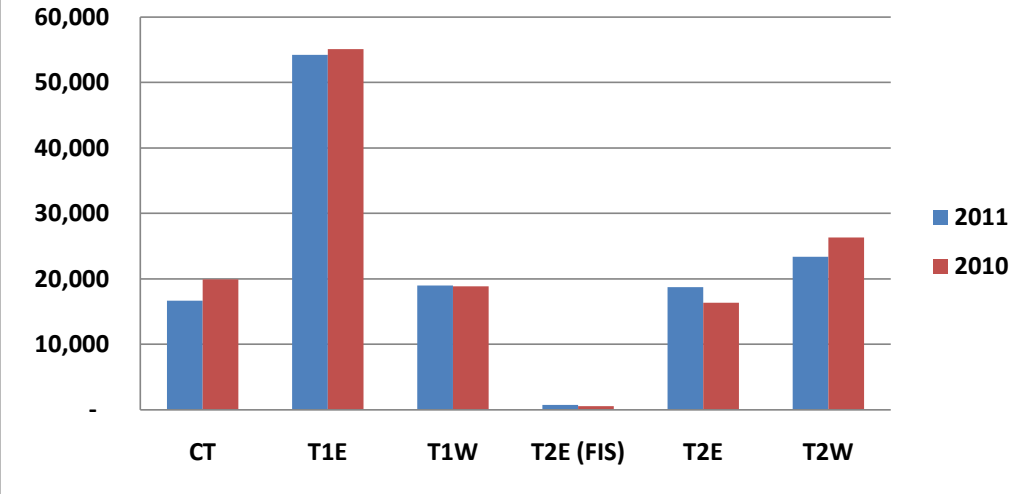
Monthly Operations Trend - 2007 through 2011



Operations by Type (2011 v 2010)



Operations by Terminal Area (2011 v 2010)



Terms and Definitions

Air Carrier (AC)	An aircraft with seating capacity of more than 60 seats or a maximum payload capacity of more than 18,000 pounds carrying passengers or cargo for hire or compensation. This includes US and foreign flagged carriers.	General Aviation (GA)	Takeoffs and landings of all civil aircraft, except those classified as air carriers, air taxis or military.
Air Taxi (AT)	An aircraft with a maximum seating capacity of 60 seats or less or a maximum payload capacity of 18,000 pounds or less carrying passengers or cargo for hire or compensation.	Itinerant Operation	Itinerant operations are operations performed by an aircraft, either IFR, SVFR, or VFR, that lands at an airport, arriving from outside the airport area, or departs an airport and leaves the airport area.
All Cargo	Air Carrier and Air Taxi Operations devoted specifically to the carriage of air cargo.	Mainline	Operations by Major, National and All Cargo Carriers. This includes US and foreign flagged carriers.
FAA Air Traffic Activity	The number of "Itinerant" arrivals and departures from the airport at which the airport traffic control tower is located.	Military (MIL)	All classes of military takeoffs and landings.
Gate Utilization Rate (Operations)	The average number of airline departures per gate, per day.	Regional	Operations conducted by the contracted partners or wholly owned subsidiaries of Mainline Carriers utilizing Regional Jets and Turboprops with 20 or more seats.
Gate Utilization Rate (Passengers)	The average number of passengers per gate, per month or per year.	Schedule Reliability	The number of Scheduled Passenger flights completed versus the number of flights scheduled expressed a percentage.