

# **San Diego International Airport**

Lindbergh Field

## **Air Traffic Report**

**September**

**2011**



**Air Service Development Department**  
San Diego County Regional Airport Authority  
Post Office Box 82776  
San Diego, CA 92138-2776  
(619) 400-2875

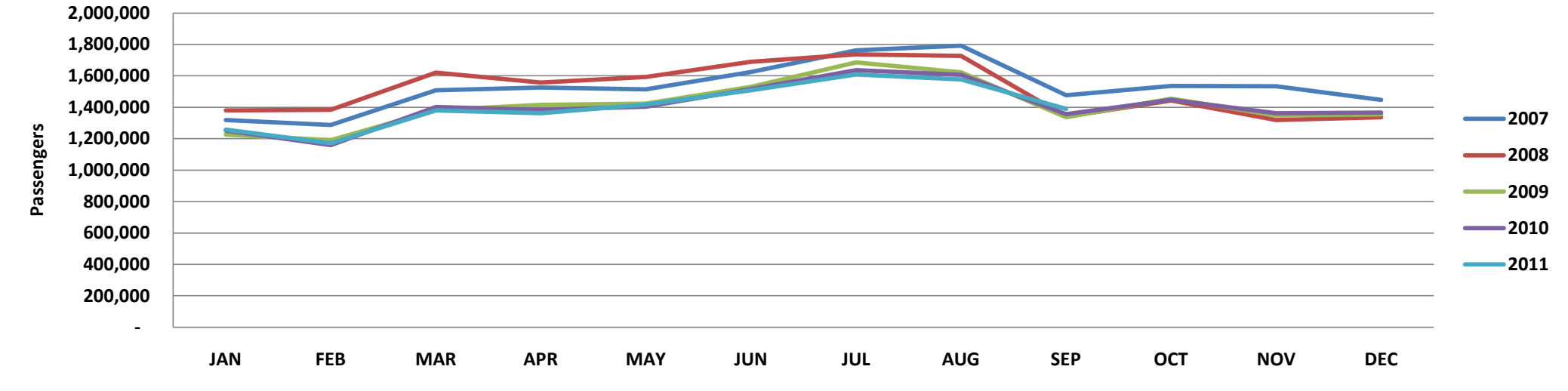
### Summary Data

	September				Calendar Year-to-Date			
	2011	2010	Change	% Change	2011	2010	Change	% Change
<b><u>Domestic Passengers</u></b>								
Enplaned Passengers	678,718	672,028	6,690	1.0%	6,197,177	6,271,962	(74,785)	-1.2%
Deplaned Passengers	<u>669,232</u>	<u>667,626</u>	<u>1,606</u>	<u>0.2%</u>	<u>6,196,761</u>	<u>6,266,349</u>	<u>(69,588)</u>	<u>-1.1%</u>
<b>Total</b>	1,347,950	1,339,654	8,296	0.6%	12,393,938	12,538,311	(144,373)	-1.2%
<b><u>International Passengers</u></b>								
Enplaned Passengers	21,020	8,219	12,801	155.7%	132,942	86,507	46,435	53.7%
Deplaned Passengers	<u>21,624</u>	<u>7,561</u>	<u>14,063</u>	<u>186.0%</u>	<u>144,510</u>	<u>88,276</u>	<u>56,234</u>	<u>63.7%</u>
<b>Total</b>	42,644	15,780	26,864	170.2%	277,452	174,783	102,669	58.7%
<b><u>Total Passengers</u></b>								
Enplaned Passengers	699,738	680,247	19,491	2.9%	6,330,119	6,358,469	(28,350)	-0.4%
Deplaned Passengers	<u>690,856</u>	<u>675,187</u>	<u>15,669</u>	<u>2.3%</u>	<u>6,341,271</u>	<u>6,354,625</u>	<u>(13,354)</u>	<u>-0.2%</u>
<b>Total</b>	1,390,594	1,355,434	35,160	2.6%	12,671,390	12,713,094	(41,704)	-0.3%
<b><u>Domestic Air Cargo Tons</u></b>								
Enplaned Cargo Tons	4,679.1	4,803.5	(124.4)	-2.6%	42,078.1	41,065.0	1,013.1	2.5%
Deplaned Cargo Tons	<u>4,752.3</u>	<u>3,929.5</u>	<u>822.8</u>	<u>20.9%</u>	<u>41,743.2</u>	<u>40,996.5</u>	<u>746.7</u>	<u>1.8%</u>
<b>Total</b>	9,431.4	8,733.1	698.4	8.0%	83,821.4	82,061.5	1,759.8	2.1%
<b><u>International Cargo Tons</u></b>								
Enplaned Cargo Tons	172.3	4.6	167.7	3644.8%	1,214.2	32.9	1,181.4	3595.1%
Deplaned Cargo Tons	<u>0.2</u>	<u>-</u>	<u>0.2</u>	<u>100.0%</u>	<u>154.5</u>	<u>1.2</u>	<u>153.3</u>	<u>12778.3%</u>
<b>Total</b>	172.4	4.6	167.8	3648.7%	1,368.8	34.1	1,334.7	3918.6%
<b><u>Total Cargo Tons</u></b>								
Enplaned Cargo Tons	4,851.4	4,808.1	43.3	0.9%	43,292.3	41,097.9	2,194.4	5.3%
Deplaned Cargo Tons	<u>4,752.5</u>	<u>3,929.5</u>	<u>823.0</u>	<u>20.9%</u>	<u>41,897.8</u>	<u>40,997.7</u>	<u>900.1</u>	<u>2.2%</u>
<b>Total</b>	9,603.9	8,737.7	866.2	9.9%	85,190.1	82,095.6	3,094.5	3.8%
<b><u>US Mail Tons</u></b>								
Enplaned US Mail Tons	1,055.1	1,335.3	(280.2)	-21.0%	9,219.6	9,152.3	67	0.7%
Deplaned US Mail Tons	<u>297.5</u>	<u>259.8</u>	<u>37.8</u>	<u>14.5%</u>	<u>2,735.2</u>	<u>2,421.2</u>	<u>314</u>	<u>13.0%</u>
<b>Total</b>	1,352.6	1,595.1	(242.5)	-15.2%	11,954.8	11,573.5	381	3.3%
<b><u>FAA Air Traffic Activity*</u></b>								
Air Carrier	12,128	11,945	183	1.5%	109,867	111,604	(1,737)	-1.6%
Air Taxi	2,015	2,261	(246)	-10.9%	20,544	22,888	(2,344)	-10.2%
General Aviation	869	884	(15)	-1.7%	8,007	9,050	(1,043)	-11.5%
Military	<u>69</u>	<u>57</u>	<u>12</u>	<u>21.1%</u>	<u>545</u>	<u>718</u>	<u>(173)</u>	<u>-24.1%</u>
<b>Total</b>	15,081	15,147	(66)	-0.4%	138,963	144,260	(5,297)	-3.7%
* FAA Aircraft Activity includes "Itinerant Operations" at the airport and will differ from other operational data reported by the airlines. <b>Source:</b> <a href="http://aspm.faa.gov/opsnet/sys/Airport.asp">http://aspm.faa.gov/opsnet/sys/Airport.asp</a>								

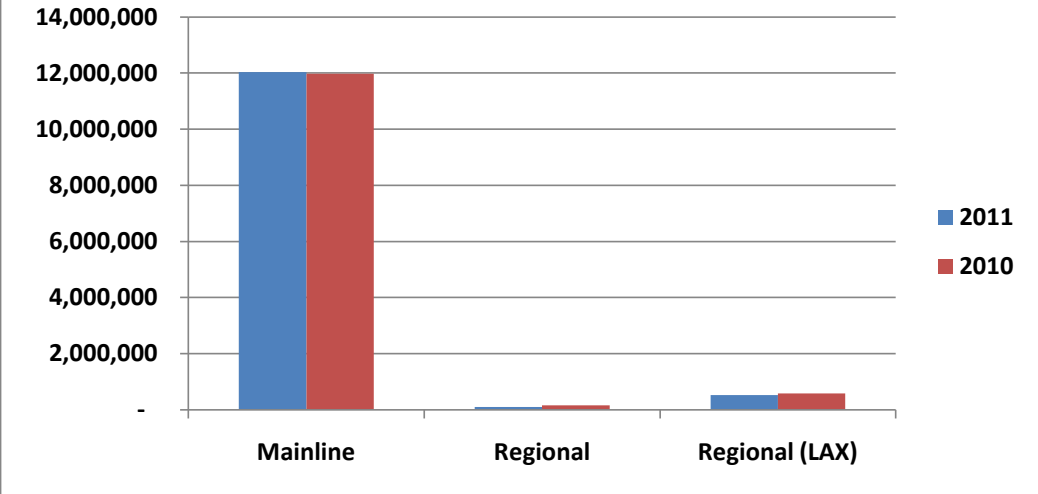
## Detailed Passenger Summary

	September				Calendar Year-to-Date			
	2011	2010	% Change	% Share	2011	2010	% Change	% Share
<b><u>Passengers by Type of Carrier*</u></b>								
Mainline	1,291,846	1,275,351	1.3%	92.9%	11,822,032	11,845,584	-0.2%	93.3%
Mainline (International)	36,969	11,136	232.0%	2.7%	210,574	127,255	65.5%	1.7%
Regional	9,219	7,876	17.1%	0.7%	107,178	154,327	-30.6%	0.8%
Regional (International)	-	-	0.0%	0.0%	-	-	0.0%	0.0%
Regional (LAX)	52,560	61,071	-13.9%	3.8%	531,606	585,928	-9.3%	4.2%
<b>Total</b>	1,390,594	1,355,434	2.6%	100.0%	12,671,390	12,713,094	-0.3%	100.0%
<b><u>Passengers by Terminal Area</u></b>								
Commuter Terminal	52,560	61,071	-13.9%	3.8%	531,606	585,928	-9.3%	4.2%
Terminal 1 East	521,291	524,896	-0.7%	37.5%	4,899,420	4,838,061	1.3%	38.7%
Terminal 1 West	234,408	232,000	1.0%	16.9%	2,077,086	2,134,924	-2.7%	16.4%
Terminal 2 (FIS)	15,092	2,205	584.4%	1.1%	79,832	44,880	77.9%	0.6%
Terminal 2 East	258,144	198,868	29.8%	18.6%	2,097,202	1,880,928	11.5%	16.6%
Terminal 2 West	309,099	336,394	-8.1%	22.2%	2,986,244	3,228,373	-7.5%	23.6%
<b>Total</b>	1,390,594	1,355,434	2.6%	100.0%	12,671,390	12,713,094	-0.3%	100.0%
<b><u>Gate Utilization Rate (Passengers)</u></b>								
Commuter Terminal	13,140	15,268	-13.9%		132,902	146,482	-9.3%	
Terminal 1 East	47,390	47,718	-0.7%		445,402	439,824	1.3%	
Terminal 1 West	29,301	29,000	1.0%		259,636	266,866	-2.7%	
Terminal 2 (FIS)	5,031	735	584.4%		26,611	14,960	77.9%	
Terminal 2 East	25,814	19,887	29.8%		209,720	188,093	11.5%	
Terminal 2 West	34,344	37,377	-8.1%		331,805	358,708	-7.5%	
<b>Net Gate Utilization Rate</b>	30,902	30,121	2.6%		281,586	282,513	-0.3%	
<b><u>Passengers versus Capacity</u></b>								
Passengers per Departure	113.2	104.1	8.8%		106.1	102.9	3.2%	
Estimated Seats per Departure**	134.5	131.8	2.1%		131.5	129.6	1.5%	
<b>Estimated Load Factor</b>	84.2%	79.0%	6.6%		80.7%	79.3%	1.7%	
<b>* As reported by the Carriers.</b>								
<b>** Source: APGDat - Airline Planning Data.</b>								

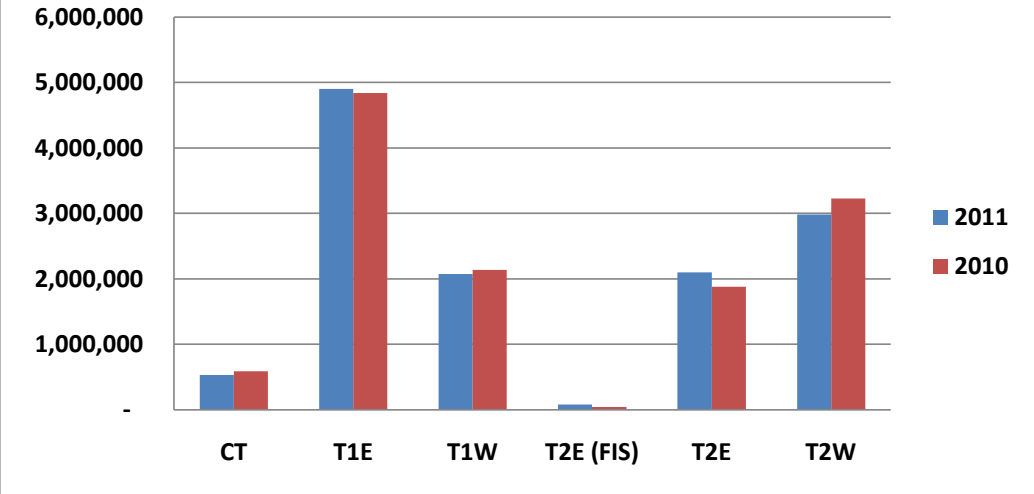
**Monthly Passenger Trend - 2007 through 2011**



**Passengers by Type of Carrier (2009 v 2010)**



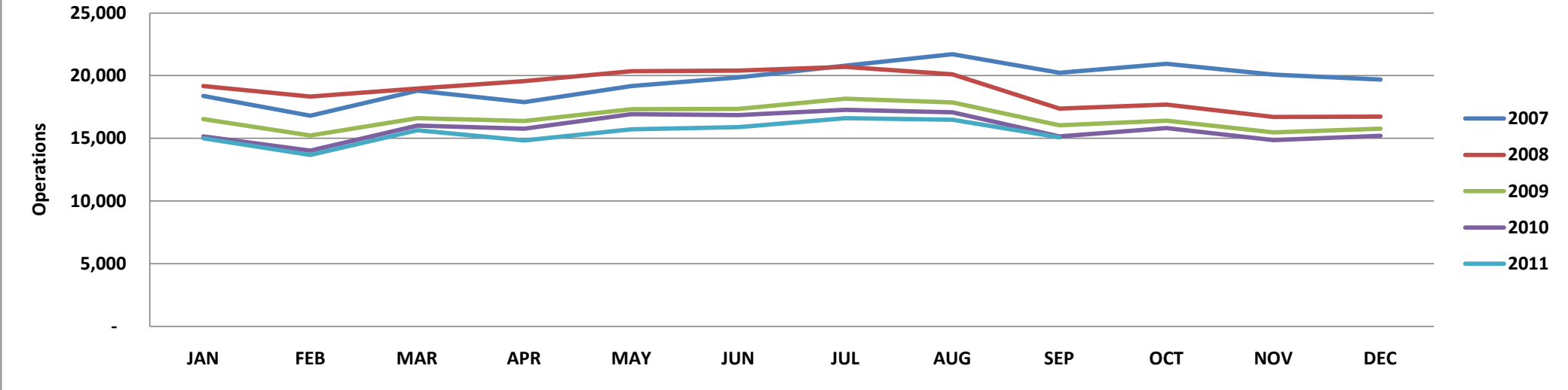
**Passengers by Terminal Area (2009 v 2010)**



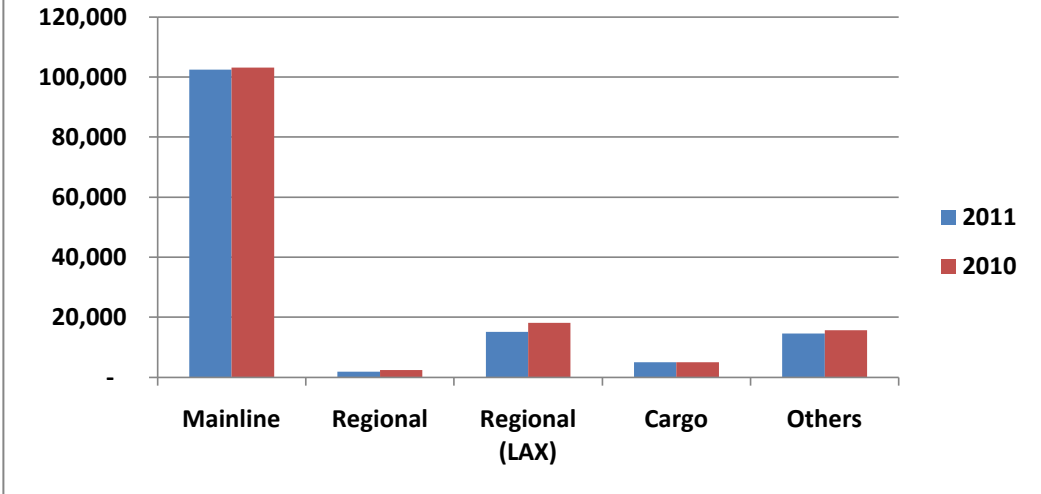
## Detailed Operations Summary

	September				Calendar Year-to-Date			
	2011	2010	% Change	% Share	2011	2010	Change	% Share
<b><u>Operations by Type of Carrier*</u></b>								
Mainline	10,939	10,952	-0.1%	72.5%	100,616	101,714	-1.1%	72.4%
Mainline (International)	274	146	87.7%	1.8%	1,822	1,487	22.5%	1.3%
Regional	170	108	57.4%	1.1%	1,820	2,354	-22.7%	1.3%
Regional (International)	-	-	0.0%	0.0%	-	-	0.0%	0.0%
Regional (LAX)	898	1,818	-50.6%	6.0%	15,131	18,052	-16.2%	10.9%
All Cargo	528	586	-9.9%	3.5%	4,952	5,032	-1.6%	3.6%
Other Operations (AC, AT, GA, MIL)	2,272	1,537	47.8%	15.1%	14,622	15,621	-6.4%	10.5%
<b>Total</b>	15,081	15,147	-0.4%	100.0%	138,963	144,260	-3.7%	100.0%
<b><u>Operations by Terminal Area</u></b>								
Commuter Terminal	898	1,818	-50.6%	7.3%	15,131	18,052	-16.2%	12.7%
Terminal 1 East	5,240	5,334	-1.8%	42.7%	48,846	49,596	-1.5%	40.9%
Terminal 1 West	1,860	1,740	6.9%	15.1%	17,112	16,951	0.9%	14.3%
Terminal 2 (FIS)	87	30	190.0%	0.7%	625	502	24.5%	0.5%
Terminal 2 East	1,998	1,607	24.3%	16.3%	16,587	14,753	12.4%	13.9%
Terminal 2 West	2,198	2,495	-11.9%	17.9%	21,088	23,753	-11.2%	17.7%
<b>Total</b>	12,281	13,024	-5.7%	100.0%	119,389	123,607	-3.4%	100.0%
<b><u>Gate Utilization Rate (Operations)</u></b>								
Commuter Terminal	3.7	7.6	-50.6%		6.9	8.3	-16.2%	
Terminal 1 East	7.9	8.1	-1.8%		8.1	8.3	-1.5%	
Terminal 1 West	3.9	3.6	6.9%		3.9	3.9	0.9%	
Terminal 2 (FIS)	0.5	0.2	190.0%		0.4	0.3	24.5%	
Terminal 2 East	3.3	2.7	24.3%		3.0	2.7	12.4%	
Terminal 2 West	4.1	4.6	-11.9%		4.3	4.8	-11.2%	
<b>Net Gate Utilization Rate</b>	4.5	4.8	-5.7%		4.9	5.0	-3.4%	
<b><u>Passenger Operations Schedule Reliability</u></b>								
Scheduled Passenger Operations	13,107	13,039	0.5%		121,216	124,598	-2.7%	
Actual Passenger Operations	12,281	13,024	-5.7%		119,389	123,607	-3.4%	
<b>Net Schedule Reliability</b>	93.7%	99.9%	-6.2%		98.5%	99.2%	-0.7%	
<b>* As reported by the Carriers and the FAA.</b>								

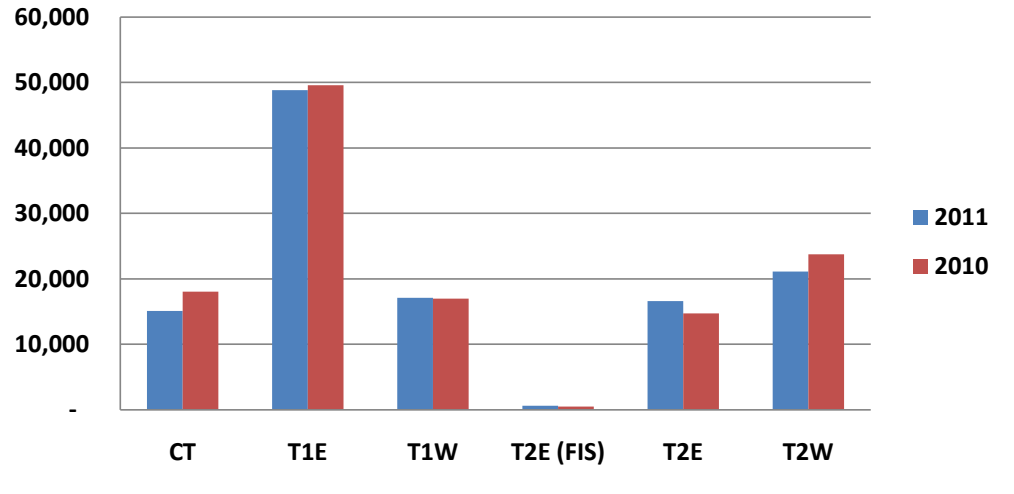
**Monthly Operations Trend - 2007 through 2011**



**Operations by Type (2009 v 2010)**



**Operations by Terminal Area (2009 v 2010)**



## Terms and Definitions

<b>Air Carrier (AC)</b>	An aircraft with seating capacity of more than 60 seats or a maximum payload capacity of more than 18,000 pounds carrying passengers or cargo for hire or compensation. This includes US and foreign flagged carriers.	<b>General Aviation (GA)</b>	Takeoffs and landings of all civil aircraft, except those classified as air carriers, air taxis or military.
<b>Air Taxi (AT)</b>	An aircraft with a maximum seating capacity of 60 seats or less or a maximum payload capacity of 18,000 pounds or less carrying passengers or cargo for hire or compensation.	<b>Itinerant Operation</b>	Itinerant operations are operations performed by an aircraft, either IFR, SVFR, or VFR, that lands at an airport, arriving from outside the airport area, or departs an airport and leaves the airport area.
<b>All Cargo</b>	Air Carrier and Air Taxi Operations devoted specifically to the carriage of air cargo.	<b>Mainline</b>	Operations by Major, National and All Cargo Carriers. This includes US and foreign flagged carriers.
<b>FAA Air Traffic Activity</b>	The number of "Itinerant" arrivals and departures from the airport at which the airport traffic control tower is located.	<b>Military (MIL)</b>	All classes of military takeoffs and landings.
<b>Gate Utilization Rate (Operations)</b>	The average number of airline departures per gate, per day.	<b>Regional</b>	Operations conducted by the contracted partners or wholly owned subsidiaries of Mainline Carriers utilizing Regional Jets and Turboprops with 20 or more seats.
<b>Gate Utilization Rate (Passengers)</b>	The average number of passengers per gate, per month or per year.	<b>Schedule Reliability</b>	The number of Scheduled Passenger flights completed versus the number of flights scheduled expressed a percentage.